



# Martz Rd at Whittaker Rd Roundabout Project

Design Information Meeting  
August 14, 2025



  @Washtenawroads



# Agenda

---

- I. Meeting instructions
- II. Presentation
- III. Q and A

# Today's Presenter



**Becky Houle**  
Project Manager –  
Traffic & Safety



**Michele Ford**  
Senior Project Manager –  
Traffic & Safety

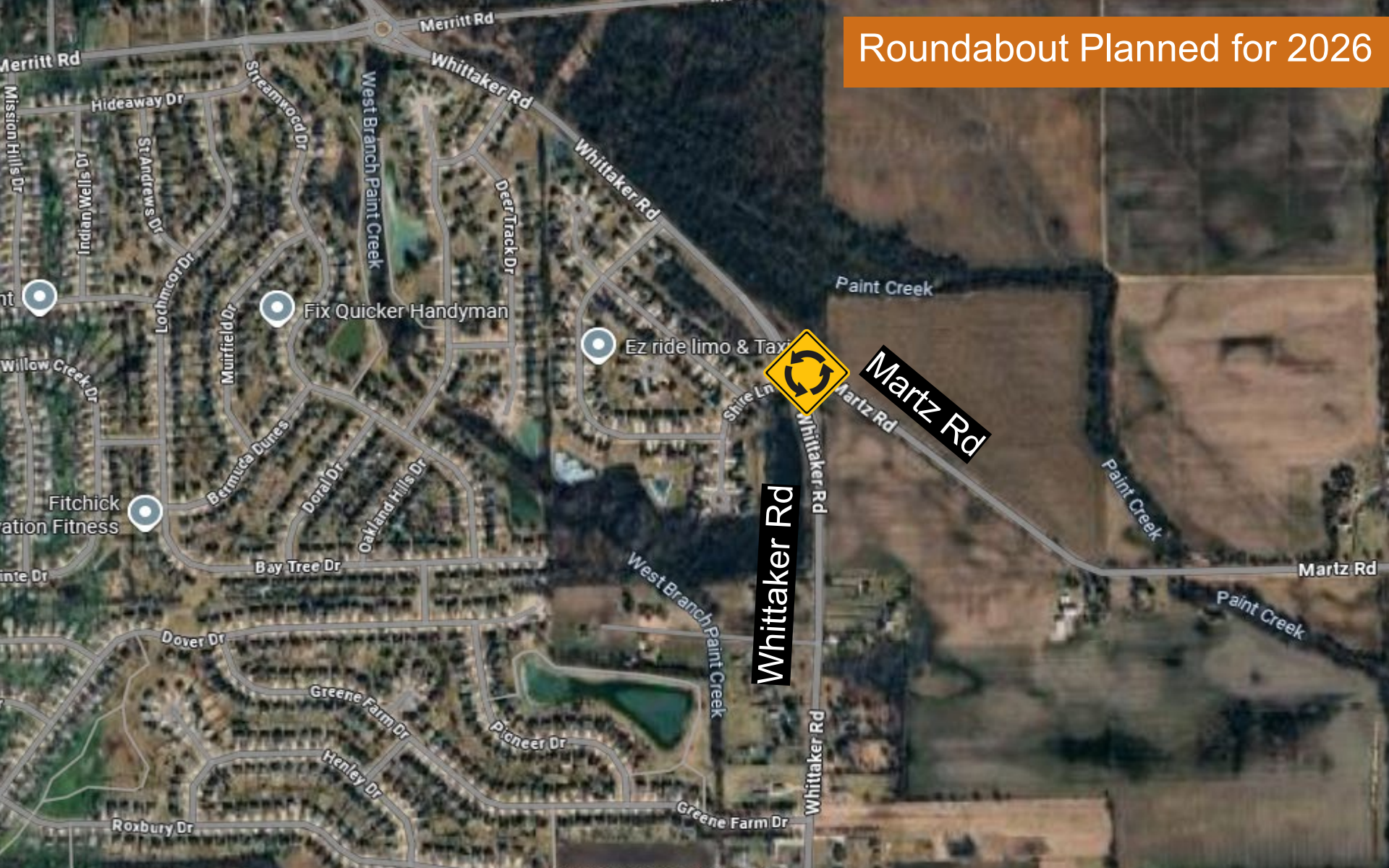


# Martz Rd at Whittaker Rd Roundabout





Roundabout Planned for 2026



# Current Condition

- Two-way Stop Controlled intersection





# Planning – Why this intersection?

- Monitored by WCRC since 2016
  - Met warrants for a traffic signal
- Identified by MDOT on a Local Safety Initiative (LSI) review in 2022
- WCRC applied for and was awarded a Federal Carbon Reduction Grant for a roundabout



# WHY A ROUNDABOUT?

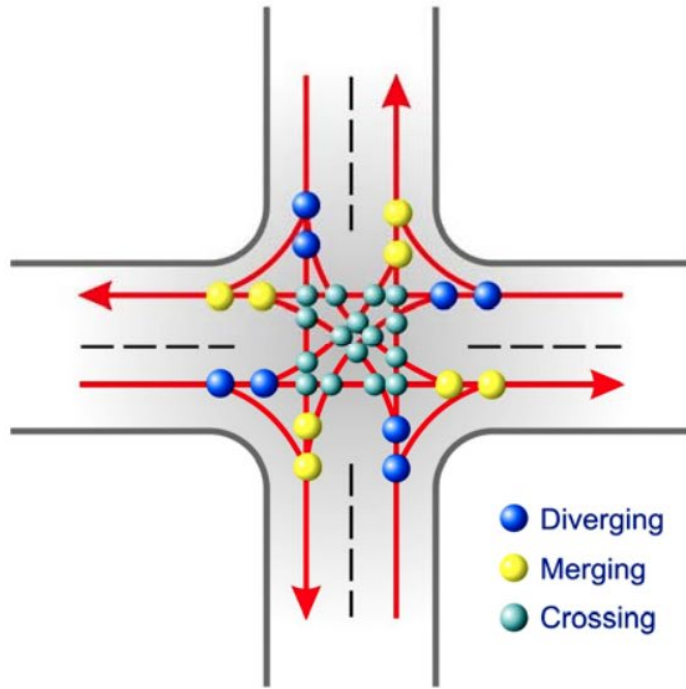


# Why Build Roundabouts?

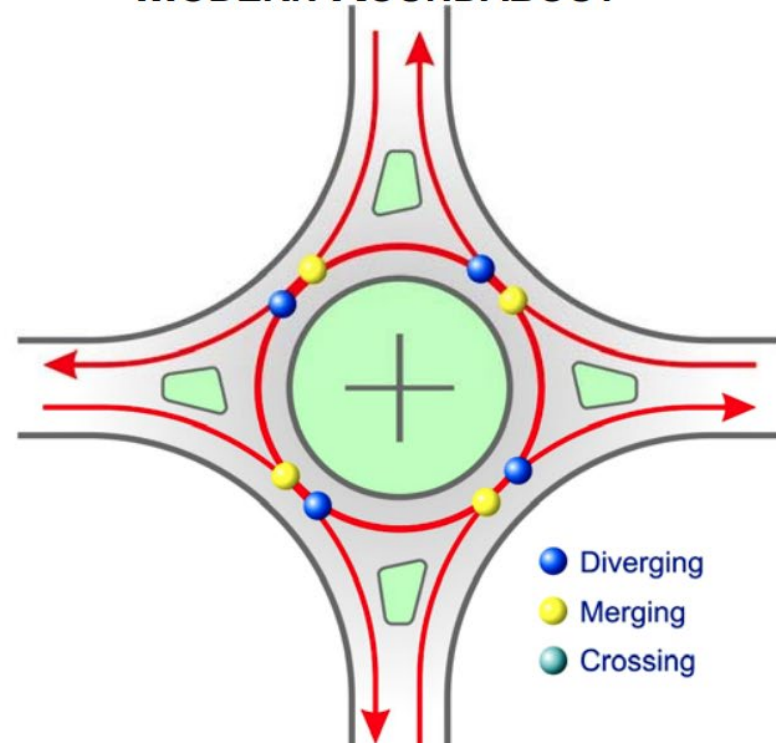
- Safety
  - 90% reduction in serious injury/fatality
  - 39% reduction of total crashes
- Lower speeds
- Improved traffic efficiency

# Intersection Points of Conflict

## STANDARD INTERSECTION



## MODERN ROUNDABOUT

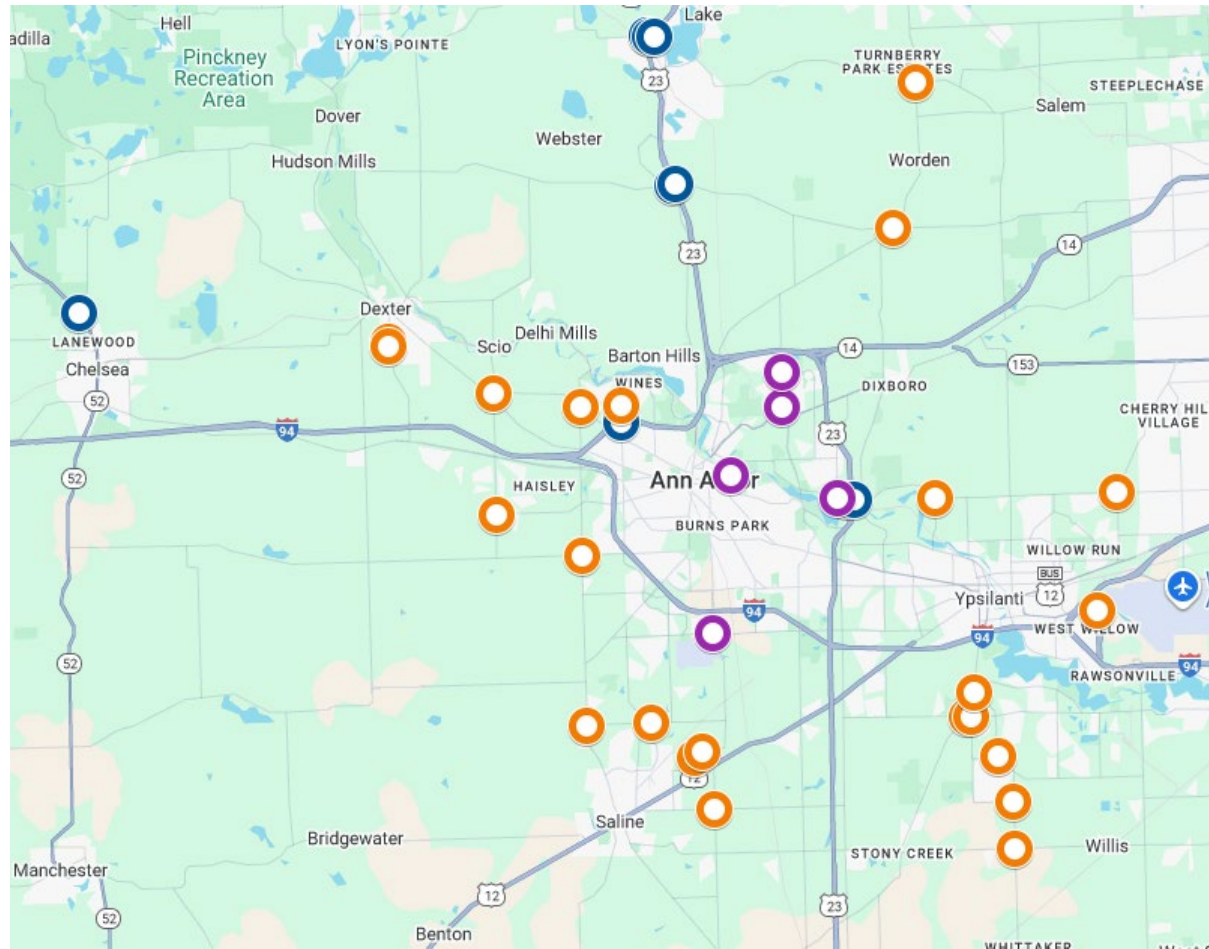


# Roundabout

- Entering traffic yields
- Counterclockwise movement
- Islands control speed







# Roundabout Resource

← → ↺ wccroads.org/faq/roundabouts/ 🔍

Washtenaw County... Bookmarks Apple Yahoo! Home Google Calendar ~... Login - Huron Gastro Google Yahoo Imported



TOGGLE CONTRAST



Home About ▾ The Board ▾ Road Work & Construction ▾ Permits ▾ Residents ▾ Doing Business with WCRC ▾ News & Resources ▾ FAQ ▾ Contact Us

## Roundabouts

[Home](#) / [FAQ](#) / Roundabouts

Roundabouts have become common fixtures on Michigan's roads due to their ability to enhance safety and reduce congestion. According to the Insurance Institute for Highway Safety, a modern roundabout provides a 39% reduction in total crashes and a 90% reduction in serious injury and fatality crashes.

It is important that motorists, bicyclists, pedestrians, and commercial vehicle operators understand the golden rules of traveling roundabouts:

1. Yield and wait for a safe gap in circulating traffic before entering the roundabout. Do not merge into the roundabout like you would with a high-speed freeway entry ramp.
2. Avoid changing lanes within a multi-lane roundabout.
3. Do not stop inside the roundabout unless traffic conditions require you to do so.
4. Use your signals to show others you are exiting.



PUBLIC EDUCATION

DRIVING TIPS

SAFETY

# Project Funding and Cost

- Federal Carbon Reduction Program
- Michigan Transportation Funds (MTF)
  - License/registration fees and fuel tax

**Construction cost estimate \$1.3 million**



# Key Project Elements

- Street lighting
- Pedestrian path relocation
- Accommodates farm equipment



MARTZ ROAD &  
WHITTAKER ROAD ROUNDABOUT  
**ROUNDBOUT  
LAYOUT**





# Roundabout Example



Whittaker Rd at Willis Rd Roundabout



# Roundabout Example



Liberty Rd at Zeeb Rd Roundabout

# Impact to Traffic

- The intersection will be closed to ALL through traffic and a detour will be posted





# Impact to Traffic

- Detour
- Residents will use Trotters Park Street
- Pathway will be maintained with temporary materials





# Tentative Schedule

- Next Steps
  - Submit bid documents to MDOT
  - MDOT bid letting
  - Contractor award
  - Tree removals before April 1, 2026
  - Construction information meeting
- Roundabout construction
  - 2026



# Find Out More

---

- **Visit project page @ [wcroads.org](http://wcroads.org)**
  - Subscribe to receive project update emails
- **Contact Project Manager**
  - Becky Houle, (734) 327-6678,  
[houleb@wcroads.org](mailto:houleb@wcroads.org)