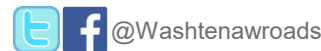


Maple Rd (Foster) Bridge Cable Post Tensioning Removal

Wednesday, September 10, 2025



Agenda

- I. Meeting Instructions
- II. Presentation
- III. Q and A

Today's Presenter

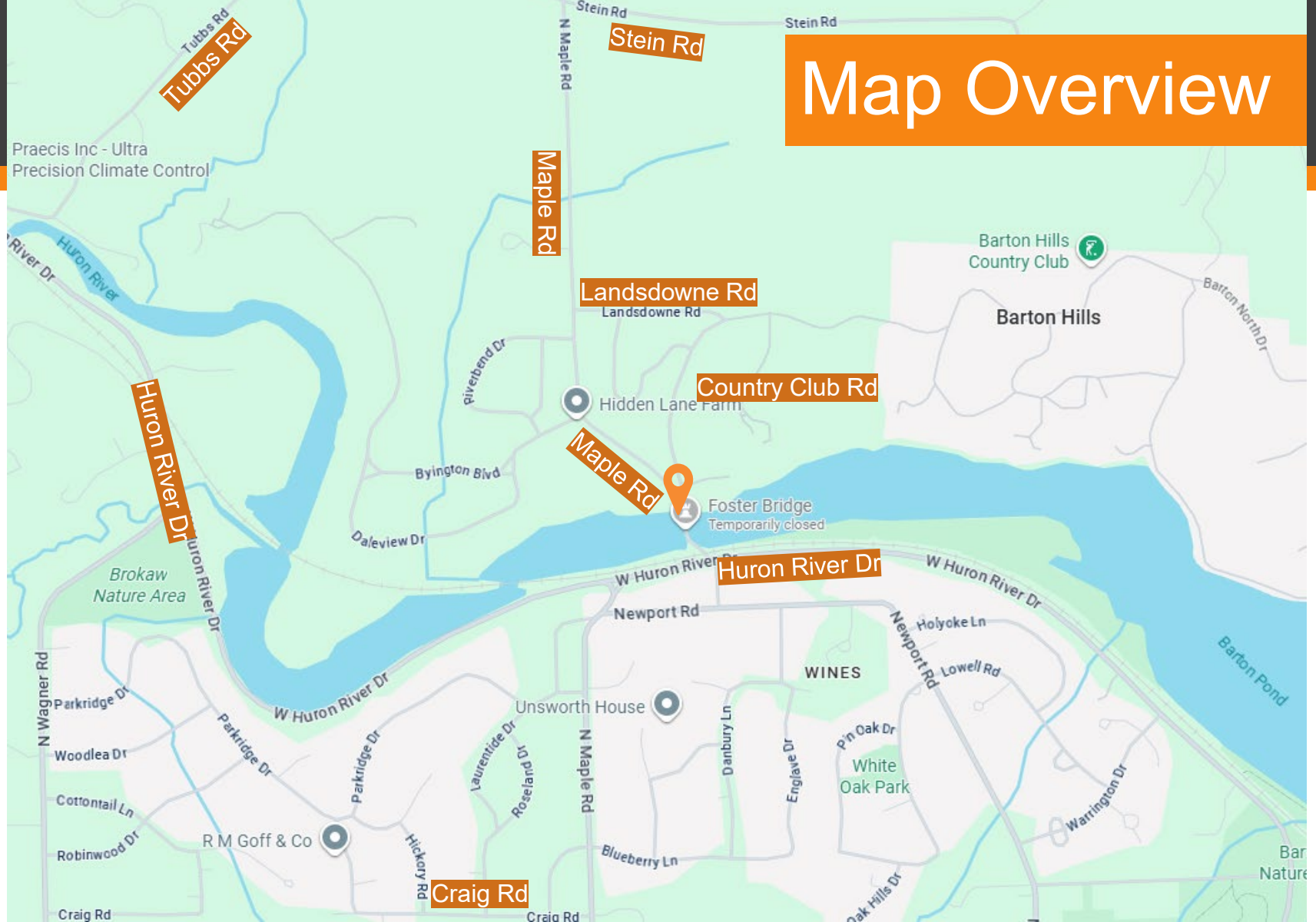


Aaron Berkholz
Assistant Director
of Engineering



Maple Rd (Foster) Bridge Post Tension System Removal

Map Overview



Functionally Obsolete & Structurally Deficient



- Bridge constructed 1800's
- Extensive rehabilitation 2003
- Currently weight restricted (posted)
 - Posting to be reduced to 5 tons

Maple Rd (Foster) Bridge - Closure



Project Plan

Removal of the Cable Post Tensioning Removal

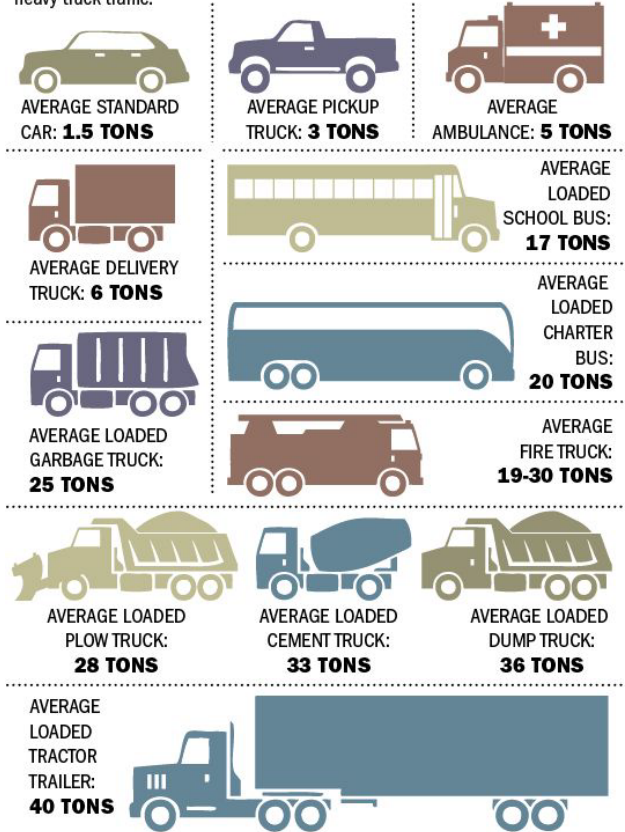


Project Plans

- Load Rating
 - Bridge analyzed to determine new load capacity
 - Posting (weight restriction) will be reduced to 5 Tons

Approximate vehicle weights

Lower weight limits for about 1,000 bridges in the region will mostly affect heavy truck traffic:



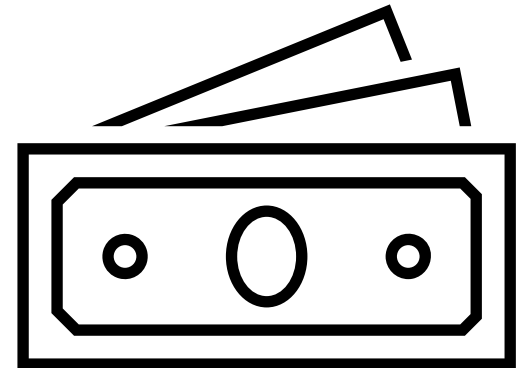
No Thru Trucks

- No Thru Trucks
 - Along Huron River Dr
 - Maple Rd between Craig Rd (near Skyline High School) and Stein Rd



Funding & Cost

- Michigan Transportation Funds (MTF)
- Estimated Cost – \$65,000



Next Steps

- Next Steps
 - Contractor onsite Sept 2025
 - Bridge reopening
- No funding identified for future improvements



Find Out More

- **Visit project page @ wcroads.org**
 - Subscribe to receive project update emails
- **Contact Project Manager**
 - Aaron Berkholz, (734) 327-6648,
berkholza@wcroads.org