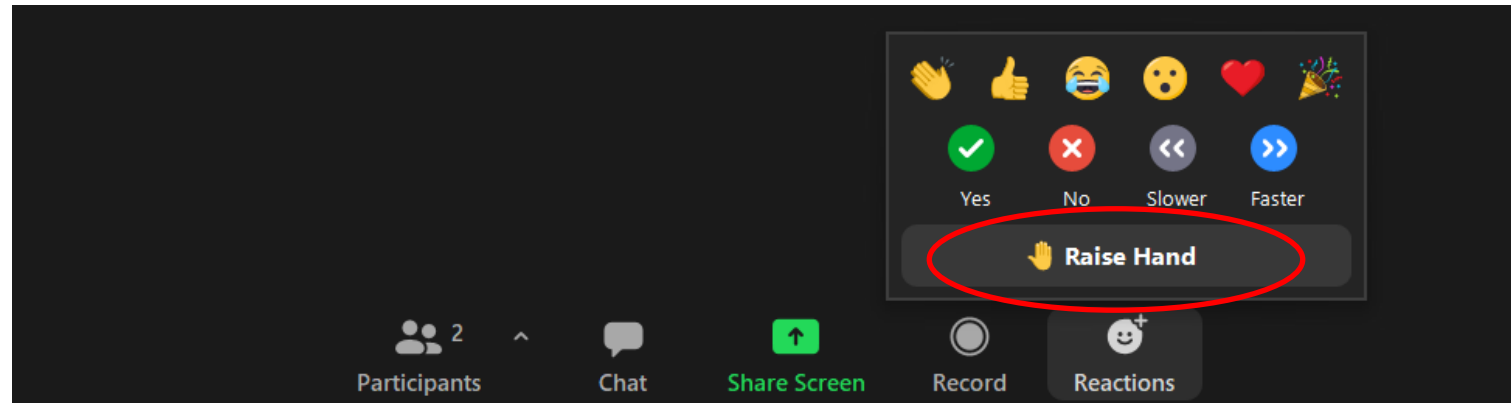


Thank you for joining today's virtual meeting!
We will begin shortly.

Tips

- You will be muted and your video turned off as you enter the meeting
- If you would like to ask a question during Q and A:
 - *On your computer or smart phone:* Join audio then click “reactions” at the bottom of screen and select “raise hand.”





- *On your touchtone phone:* Dial *9

Stony Creek Rd Bridge Replacement

November 7, 2023



  @Washtenawroads



Agenda

- I. Housekeeping
- II. Presentation
- III. Q and A

Housekeeping



Meeting audio and video is being recorded and will be posted to wcroads.org



You will be asked to virtually “raise your hand” during Q and A



Chat is enabled

Today's Presenter



Nate Murphy

Sr. Project Manager – Design & Construction

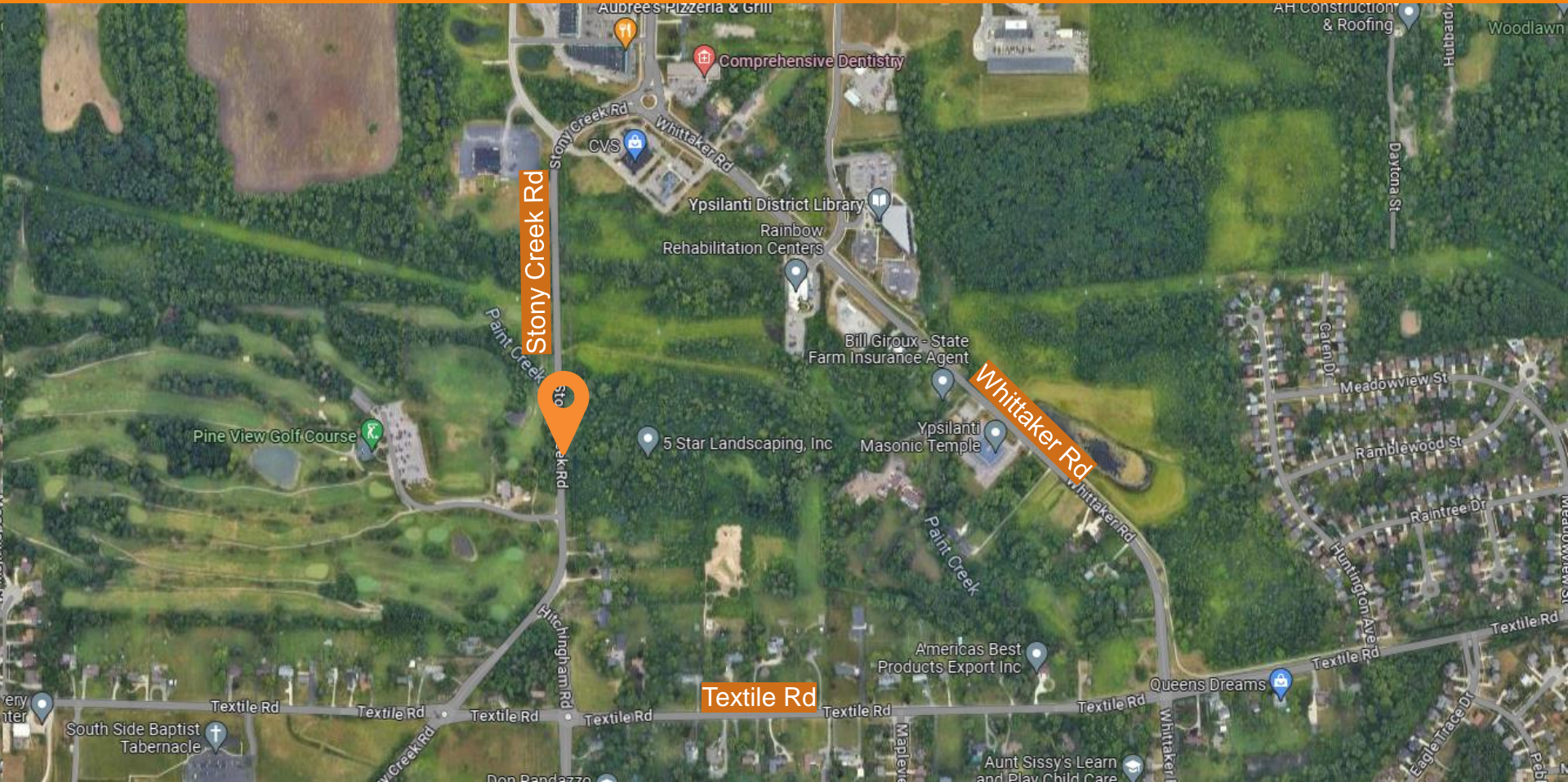
Direct: (734) 327-6647 | Main: (734) 761-1500

murphyn@wcroads.org



Stony Creek Rd Bridge Replacement

Map Overview



Existing Road

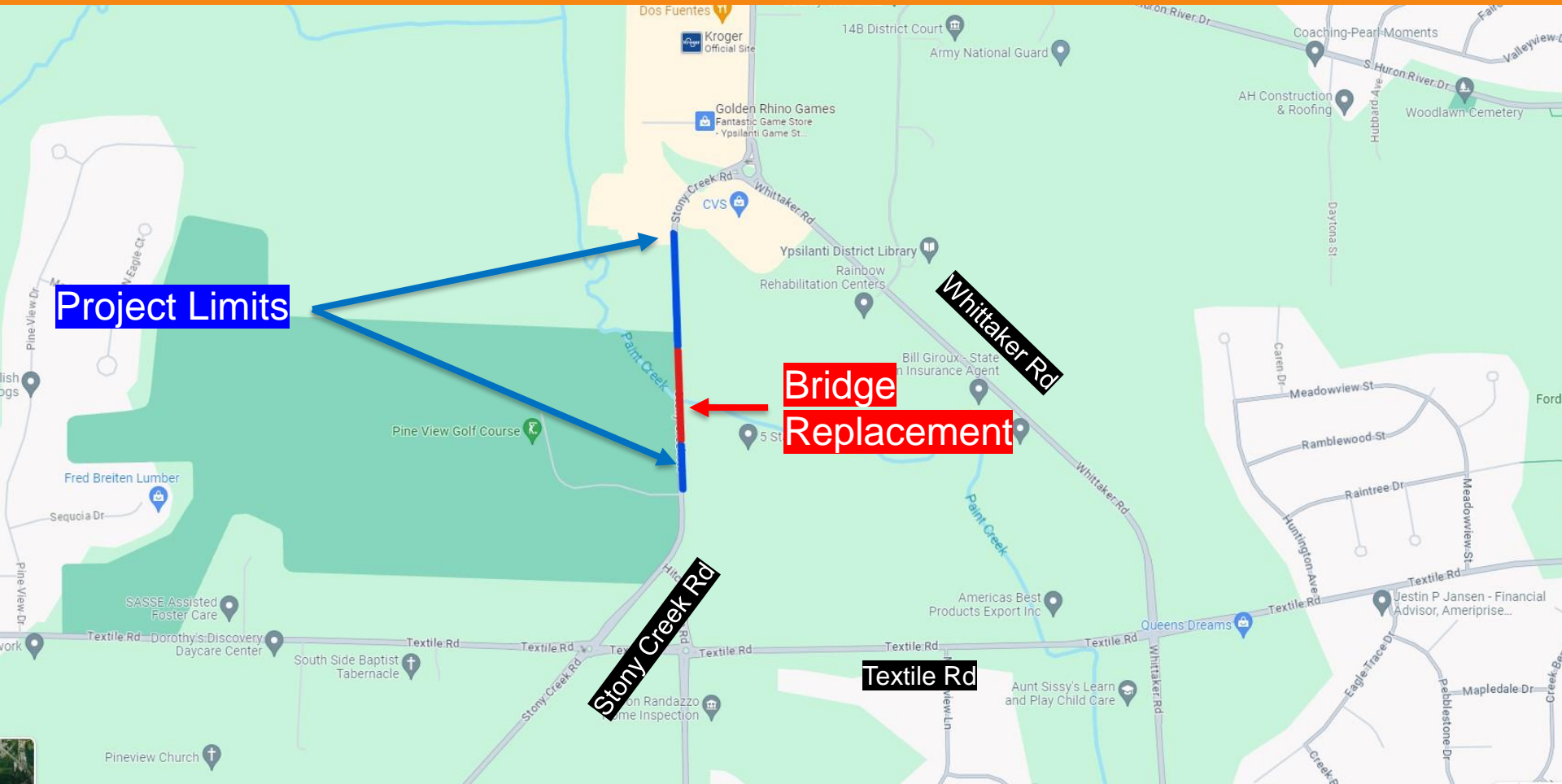


Existing Bridge



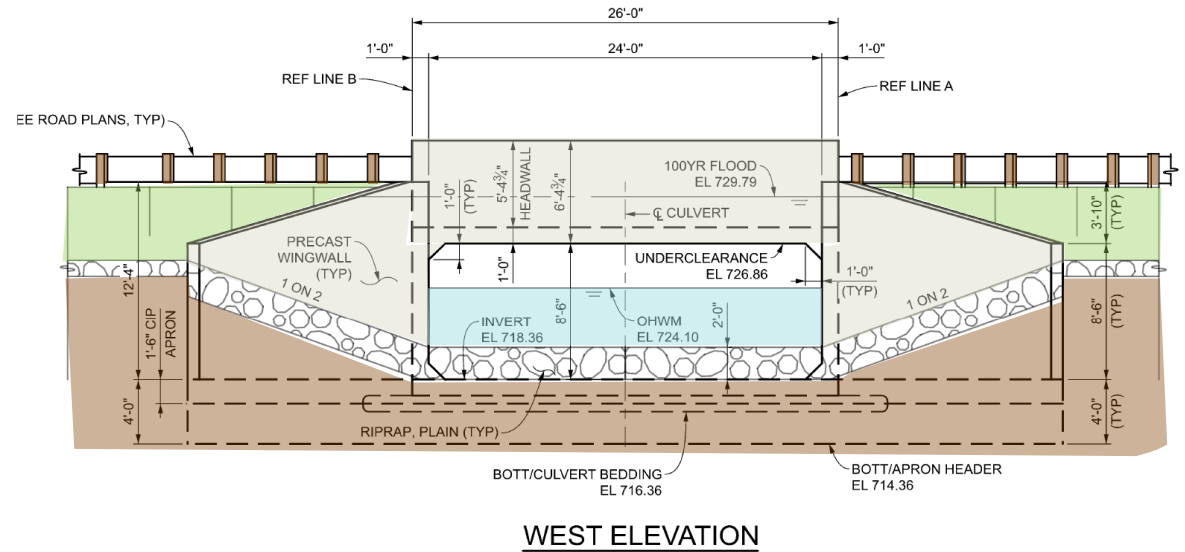
Existing bridge built in 1966.
Concrete tee-beams are reaching
the end of their service life.

Project Limits

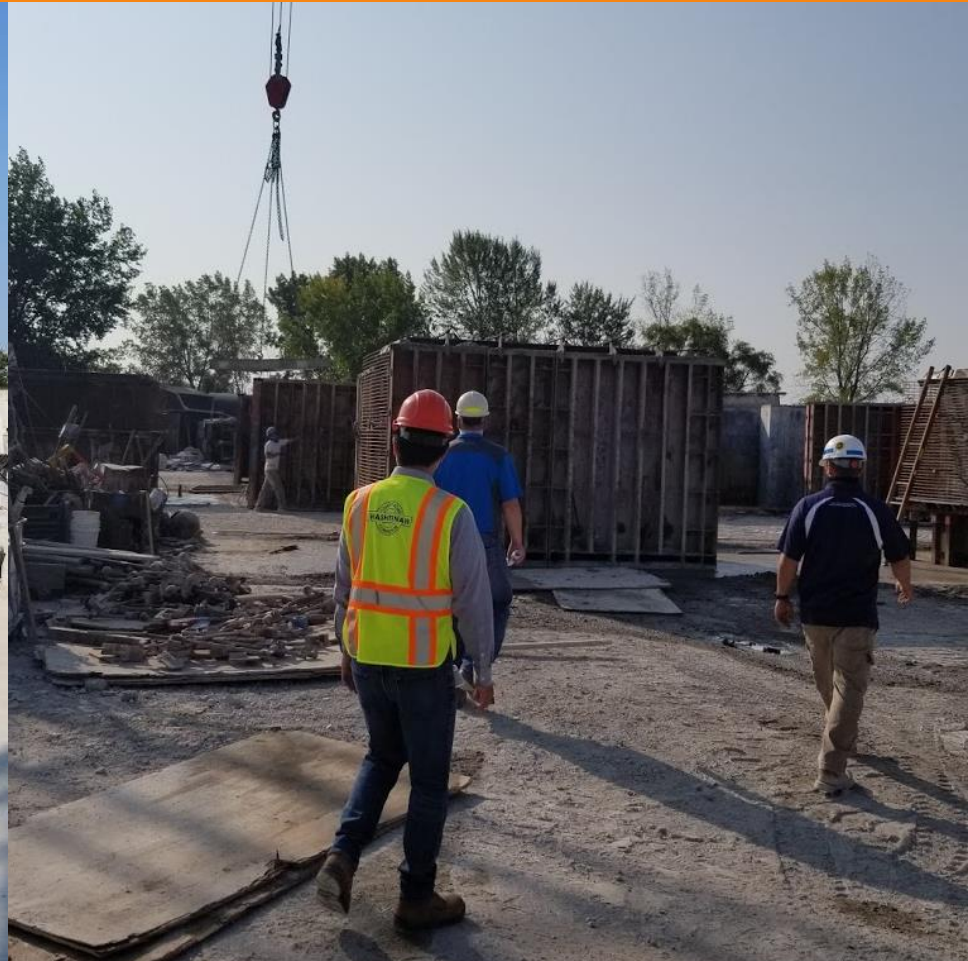


Project Plans

- Tree removals
- Utility relocations
- Bridge replacement



Precast Concrete



Precast Concrete Bridge Structure



Precast Concrete Bridge Structure



Precast Concrete Bridge Structure



Precast Concrete Bridge Structure



Precast Concrete Bridge Structure

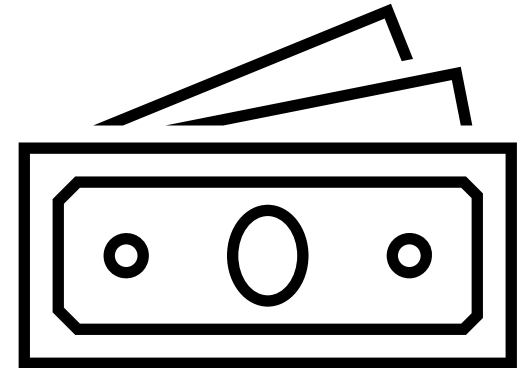


Precast Concrete Bridge Structure



Funding & Cost

- Local Agency Bridge Program (95%)
- Michigan Transportation Funds (MTF) (5%)
- Estimated Construction Cost - \$1.2 Million



Impact to Traffic

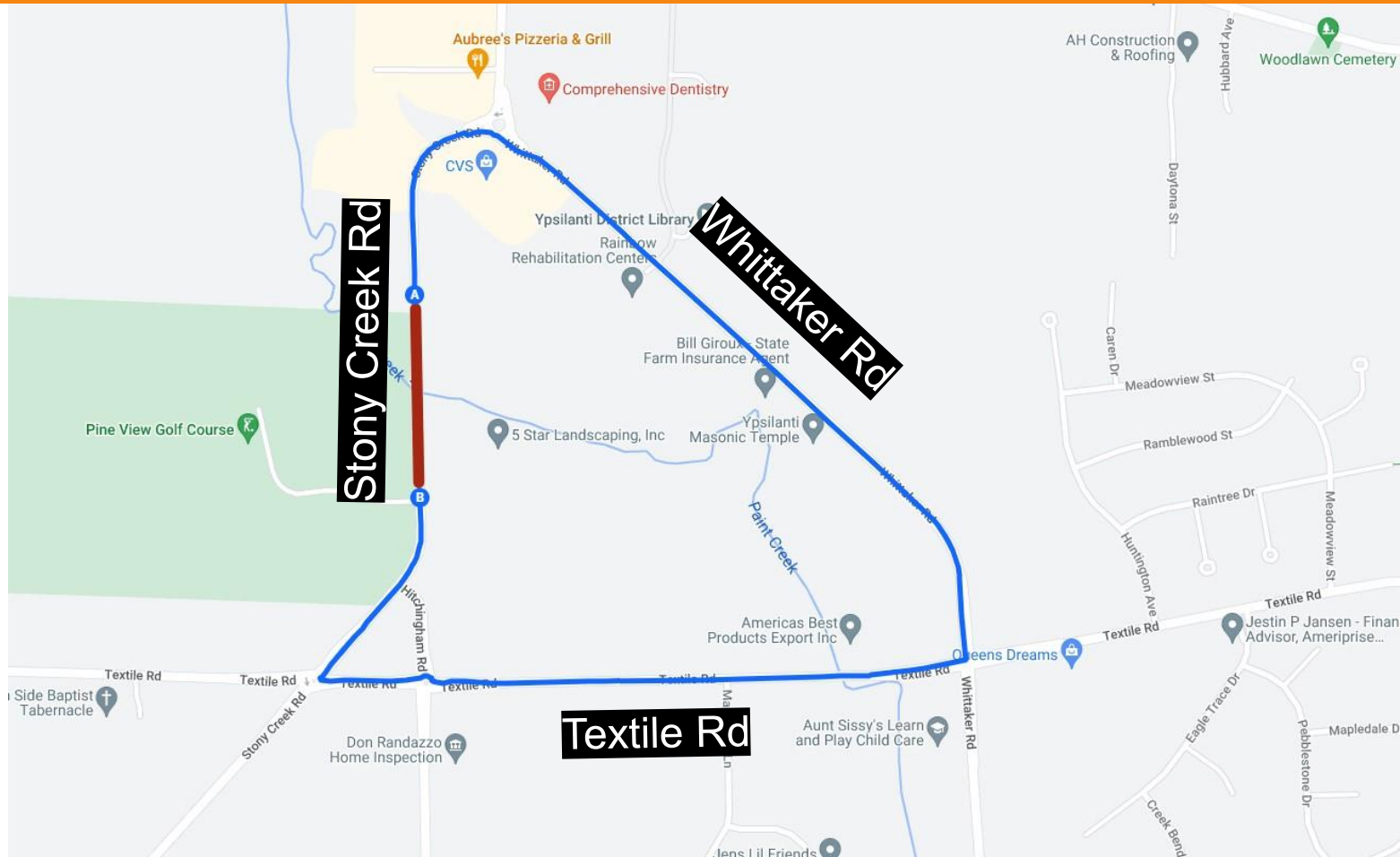


Impact to Traffic

- Road Closure with Detour
- 12 weeks estimated construction duration



Detour



Next Steps

- Next Steps
 - Submit bid documents
 - MDOT Bid letting
 - Contactor award
 - Construction information meeting
- Bridge Replacement
 - Summer 2024



Find Out More

- **Visit project page @ wcroads.org**
 - Subscribe to receive project update emails
- **Contact Project Manager**
 - Nate Murphy, (734) 327-6647,
murphyn@wcroads.org

Project Updates



Road Work & Construction

[Home](#) / [Road Work & Construction](#) / [Current Projects](#)

The Washtenaw County Road Commission's scheduled primary road projects are included on the map and lists below. To learn more about a project, click the blue road segment or dot and select "More Info" to view the project's page. Additional projects may be added to the map and list throughout the year. Local road projects are not included on this map but are included in the [Weekly Road Work Schedule](#), updated during the construction season.

The Washtenaw County Road Commission is responsible for roadways outside of city and village limits in Washtenaw County. The Michigan Department of Transportation (MDOT) is responsible for the construction and resurfacing of state highways. To learn more about projects in specific municipalities or on MDOT routes, please visit that agency's website.

[Weekly Road Work Schedule](#) | [See Last Year's Projects](#) | [Subscribe to receive email updates from WCRC](#)
[Current Projects Map PDF](#)



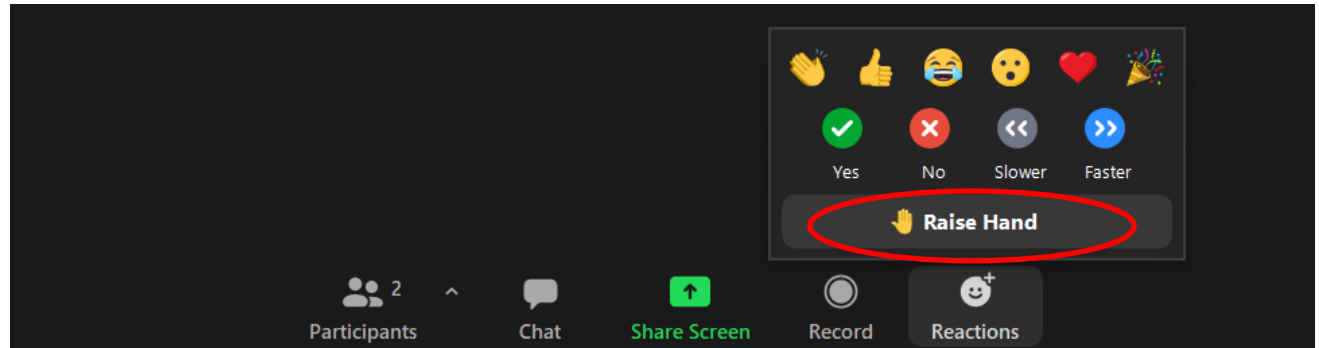


Q AND A



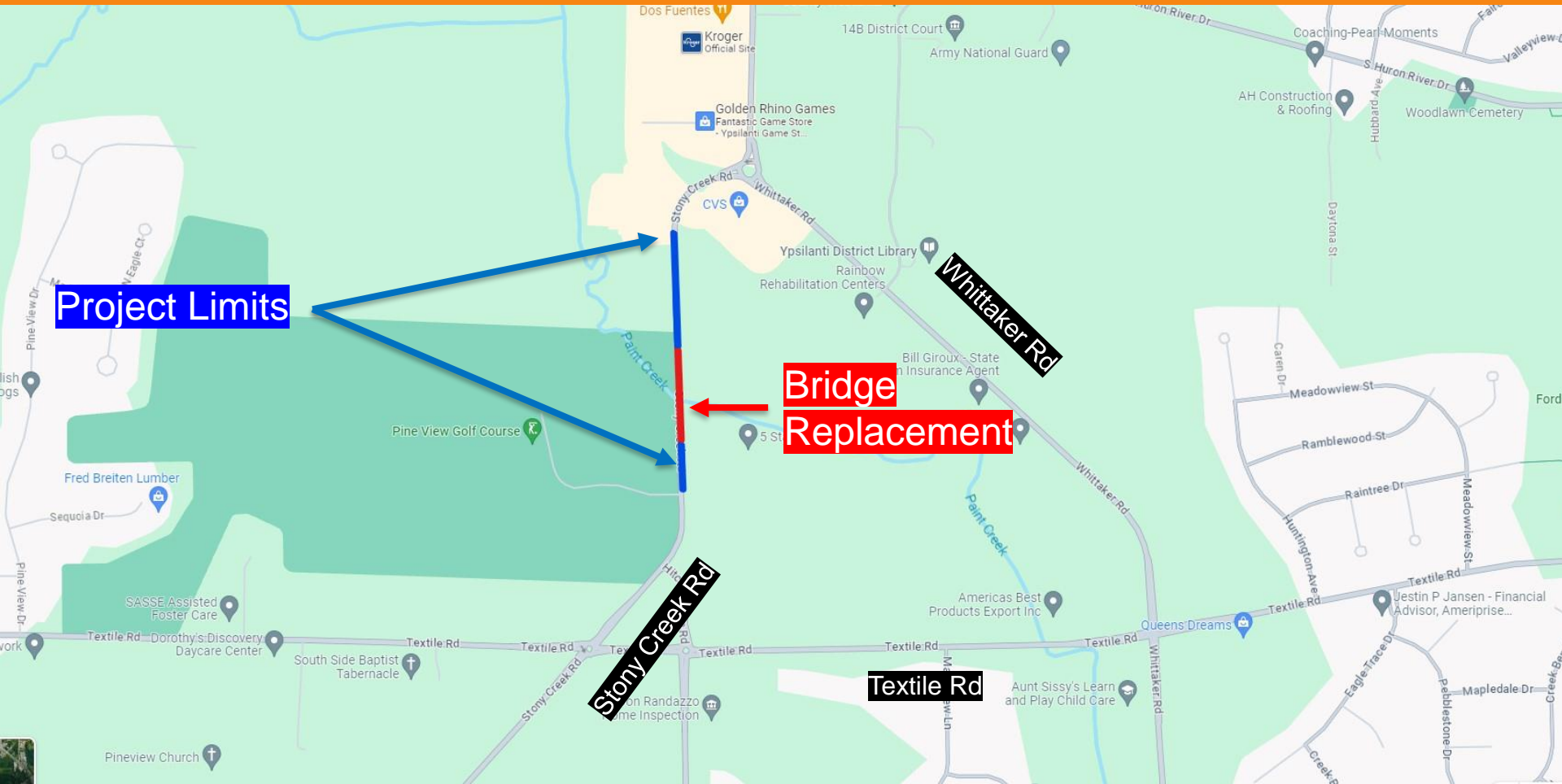
To Ask a Question

- On your computer or smart phone:
 - Join audio then click “reactions” at the bottom of screen and select “raise hand”



- On your touchtone phone: Dial *9

Project Limits



Project Limits

Bridge Replacement

Whittaker Rd

Stony Creek Rd

Textile Rd

Find Out More

- **Visit project page @ wcroads.org**
 - Subscribe to receive project update emails
- **Contact Project Manager**
 - Nate Murphy, (734) 327-6647,
murphyn@wcroads.org

Stony Creek Rd Bridge Replacement

