

WASHTENAW COUNTY ROAD COMMISSION
Bi-Monthly Meeting of the Board of County Road Commissioners

August 20, 2019 – 1:00 p.m.

Washtenaw County Road Commission Boardroom ♦ 555 N. Zeeb Road ♦ Ann Arbor, Michigan 48103

AGENDA

I. CALL TO ORDER/PLEDGE OF ALLEGIANCE

II. APPROVAL OF AGENDA

III. ACCEPTANCE OF MINUTES Page 1-16

- A. Board Meeting Minutes of August 6, 2019
- B. Executive Session Minutes of August 6, 2019

IV. RETIREMENT PRESENTATION – Kent J. Hopkins

V. PUBLIC COMMENT

This is the time set aside on the agenda to receive comments from the public. This is not intended to be a period for dialogue or questions and answers. Each person will be allotted (3) minutes to address the Board.

- A. Public Comment
- B. Written Communications..... **Page 17-30**

VI. NEW BUSINESS

A. Consent Agenda Page 31-54

- 1. Retirement Resolution of Public Service – Kent J. Hopkins
- 2. Textile Road at Woodland Drive – MDOT Contract No. 19-5403
- 3. SAW Grant – Storm Structure Cleaning Contract Services
- 4. Whitmore Lake High School Homecoming Parade – Road Closure
- 5. 905 E. Cross Street, Ypsilanti – Right of Way Sidewalk Easement
- 6. 2020 Capital Equipment Purchase – Tractor Upfitting
- 7. Payroll & Bills August 7, 2019

B. Action Item

- 1. Hewitt Road Permit Application #14345 – Waiver Request

VII. REPORTS Page 55-60

- A. County Commissioner’s Report
- B. Road Commissioners’ Report
- C. Managing Director’s Report
 - 1. Staff Report of 7-29 thru 8-11-19
 - 2. Michigan Transportation Fund Receipts

VIII. ADJOURNMENT

WASHTENAW COUNTY BOARD OF ROAD COMMISSIONERS

555 North Zeeb Road, Ann Arbor, MI 48103

Minutes of August 6, 2019

Board Present: Road Commissioners Doug Fuller, Barbara Fuller, Rod Green

Staff Present: S. Siddall, J. Harmon, M. MacDonell, D. Ackerman, C. Ryan, E. Kizer

Others Present: R. Jamnick, T. Derderian, J. Scharf

The meeting was called to order at 1:00 p.m. by Douglas Fuller, Chair. The Pledge of Allegiance was recited.

APPROVAL OF AGENDA

RC19-255 R. Green moved, B. Fuller seconded to approve the agenda as presented. Voice Vote: YEAS: 3 NAYS: 0 ABSENT: 0 ABSTAIN: 0 Motion Carried.

ACCEPTANCE OF THE MINUTES

RC19-256 B. Fuller moved, R. Green seconded, the Board hereby approves the Board Meeting Minutes of July 16, 2019 as presented. Voice Vote: YEAS: 3 NAYS: 0 ABSENT: 0 ABSTAIN: 0 Motion Carried.

RC19-257 B. Fuller moved, R. Green seconded, the Board hereby approves the Board Working Session Minutes of July 22, 2019 as presented. Voice Vote: YEAS: 3 NAYS: 0 ABSENT: 0 ABSTAIN: 0 Motion Carried.

PUBLIC COMMENT

Mr. John Scharf thanked the Board of Road Commissioners for the service and listening to the community regarding the discontinuation of the herbicide roadside spraying program. Mr. Scharf thanked the Road Commission for having the millage review meeting on September 9th.

WRITTEN COMMUNICATIONS

ISSUED: August 1, 2019
WHERE: Curtis Road between Plymouth Road and 6 Mile Road
TOWNSHIP: Salem and Superior
WHY: Preventative maintenance – chip seal – Curtis Road closed
WHEN: Thursday, August 1, 2019
CONTACT: Adam Lape, Superintendent of Maintenance

ISSUED: July 31, 2019
WHERE: North Territorial Road between &S-23 and Spenser Road
TOWNSHIP: Northfield
WHY: Preventative maintenance – chip seal – North Territorial Road closed
WHEN: Wednesday, July 31, 2019
CONTACT: Ken Harris, Superintendent of Maintenance

ISSUED: July 29, 2019
WHERE: North Territorial Road between Webster Church Road and Maple Road
 Mast Road between North Territorial Road and Strawberry Lake Road
 Strawberry Lake Road between Mast Road and the county line
TOWNSHIP: Webster
WHY: Preventative maintenance – chip seal – roads closed
WHEN: Tuesday, July 30, 2019
CONTACT: Ken Harris, Superintendent of Maintenance

ISSUED: July 29, 2019
WHERE: Zeeb Road between Ellsworth Road and Waters Road
TOWNSHIP: Lodi
WHY: Completion of paving project - Zeeb Road re-opened
WHEN: Monday, July 29, 2019
CONTACT: James Hui, Project Manager

ISSUED: July 29, 2019
WHERE: Hogback Road between Clark Road and Huron River Drive
TOWNSHIP: Ann Arbor
WHY: Completion of paving project – Hogback Road re-opened
WHEN: Saturday, July 27, 2019
CONTACT: Mike Bernbeck, Project Manager

ISSUED: July 30, 2019
WHERE: Pleasant Lake Road between Fletcher Road and Lima Center Road and
 Fletcher Road between Pleasant Lake Road and Ellsworth Road
TOWNSHIP: Freedom
WHY: DTE-electric line maintenance
WHEN: Wednesday, July 31, 2019
CONTACT: John Posegay, Permits Coordinator

ISSUED: July 25, 2019
WHERE: Mast Road between N. Territorial Road and Strawberry Lake Road and
 Strawberry Lake Road between Mast Road and the county line
TOWNSHIP: Webster
WHY: Preventative maintenance – chip seal – Mast Road closed
WHEN: Monday, July 29, 2019
CONTACT: Ken Harris, Superintendent of Maintenance

ISSUED: July 25, 2019
WHERE: Joy Road between Mast Road and Zeeb Road
TOWNSHIP: Border of Webster and Scio Townships
WHY: Road resurfacing – Joy Road closed
WHEN: Monday, July 29, 2019
CONTACT: Adam Lape, Superintendent of Maintenance

ISSUED: July 24, 2019
WHERE: North Territorial Road between Hankerd Road and Dexter-Pinckney Road
TOWNSHIP: Dexter
WHY: Preventative maintenance – chip seal – North Territorial Road closed
WHEN: Thursday, July 25, 2019
CONTACT: Ken Harris, Superintendent of Maintenance

ISSUED: July 23, 2019
WHERE: Parker Road between Scio Church Road and Dexter-Chelsea Road
TOWNSHIP: Border of Lima and Lima Townships
WHY: Preventative maintenance – Parker Road closed
WHEN: Tuesday, July 23, 2019
CONTACT: Ken Harris, Superintendent of Maintenance

ISSUED: July 18, 2019
WHERE: Joy Road between Mast Road and Zeeb Road
TOWNSHIP: Border of Webster and Scio Townships
WHY: Drainage improvements and shoulder maintenance – Joy Road closed
WHEN: Monday, July 22, 2019
CONTACT: Adam Lape, Superintendent of Maintenance

ISSUED: July 16, 2019
WHERE: Grove Road between Margarita Street and Harris Road
TOWNSHIP: Ypsilanti
WHY: Slope stabilization and road repairs – Grove Road closed
WHEN: Thursday, July 18, 2019
CONTACT: Aaron Berkholz, Senior Project Manager

ISSUED: July 16, 2019
WHERE: Grass Lake Road between Sylvan Road and M-52
TOWNSHIP: Sharon
WHY: Preventative maintenance – chip seal – Grass Lake Road closed
WHEN: Wednesday, July 17, 2019
CONTACT: Ken Harris, Superintendent of Maintenance

ISSUED: July 17, 2019
WHERE: Hogback Road between Clark Road and Huron River Drive
TOWNSHIP: Ann Arbor
WHY: Road resurfacing – Hogback Road closed
WHEN: Monday, July 22, 2019
CONTACT: Mike Bernbeck, Project Manager

ISSUED: July 17, 2019
WHERE: Sylvan Road between Heim Road and Old US-12
TOWNSHIP: Sylvan
WHY: Preventative maintenance – chip seal – Sylvan Road closed
WHEN: Thursday, July 18, 2019
CONTACT: Ken Harris, Superintendent of Maintenance

ISSUED: July 16, 2019
WHY: WCRC Board Announcement – WCRC Herbicide Spraying termination
WHEN: July 16, 2019

ISSUED: July 15, 2019
WHERE: Sharon Hollow Road between Sharon Valley Road and Pleasant Lake Road
and Pleasant Lake Road between Sharon Hollow Road and M-52
TOWNSHIP: Sharon
WHY: Preventative maintenance – chip seal – Sharon Hollow Road closed
WHEN: Tuesday, July 16, 2019
CONTACT: Ken Harris, Superintendent of Maintenance

ISSUED: July 15, 2019
WHERE: Sharon Valley Road between Prospect Hill Road and Sharon Hollow Road
TOWNSHIP: Sharon
WHY: Preventative maintenance – chip seal – Sharon Valley Road closed
WHEN: Tuesday, July 16, 2019
CONTACT: Ken Harris, Superintendent of Maintenance

ISSUED: July 15, 2019
WHY: Congratulations on Michigan Certified Bronze Veteran Friendly Employer
FROM: Randy Leffel, Michigan Veterans Affairs Agency (MVAA)

ISSUED: July 11, 2019
WHERE: Austin Road between the County Line and the Village of Manchester
TOWNSHIP: Manchester
WHY: Preventative maintenance – chip seal – Austin Road closed
WHEN: Monday, July 15, 2019
CONTACT: Ken Harris, Superintendent of Maintenance

CONSENT AGENDA

The items approved on the Consent Agenda are as follows:

RC19-258 R. Green moved, B. Fuller seconded the approval of the Consent Agenda for August 6, 2019 as presented. Voice Vote: YEAS: 3 NAYS: 0 ABSENT: 0 ABSTAIN: 0 Motion Carried.

2019 County Wide Guardrail Bid Results

RC19-259 R. Green moved, B. Fuller seconded that upon the recommendation of the Director of Engineering/County Highway Engineer and the concurrence of the Managing Director, the Board hereby accepts the low bid and authorizes the Managing Director to sign the contract with Action Traffic Maintenance for the 2019 County Wide Guardrail project. Voice Vote: YEAS: 3 NAYS: 0 ABSENT: 0 ABSTAIN: 0 Motion Carried.

2019 Pedestrian Signal Upgrades Bid

RC19-260 R. Green moved, B. Fuller seconded that upon the recommendation of the Director of Engineering/County Highway Engineer and the concurrence of the Managing Director, the Board hereby accepts the unit prices contained within the low bid and authorizes the Managing Director to sign the contract with J. Ranck Electric, Inc. for the 2019 Pedestrian Signal Upgrades project. Voice Vote: YEAS: 3 NAYS: 0 ABSENT: 0 ABSTAIN: 0 Motion Carried.

2019 Pedestrian Facilities Upgrades Bid

RC19-261 R. Green moved, B. Fuller seconded that upon the recommendation of the Director of Engineering/County Highway Engineer and the concurrence of the Managing Director, the Board hereby accepts the unit prices contained within the low bid and authorizes the Managing Director to sign the contract with Doan Construction Co., Inc. for the 2019 Pedestrian Facilities Upgrades project. Voice Vote: YEAS: 3 NAYS: 0 ABSENT: 0 ABSTAIN: 0 Motion Carried.

Grove Road Slope Stabilization – YCUA Agreement

RC19-262 R. Green moved, B. Fuller seconded that upon the recommendation of the Director of Engineering/County Highway Engineer and the concurrence of the Managing Director, the Board hereby approves the Grove Road Improvement Agreement with the Ypsilanti Community Utilities Authority and authorizes the Chair and Managing Director to sign said Agreement. Voice Vote: YEAS: 3 NAYS: 0 ABSENT: 0 ABSTAIN: 0 Motion Carried.

Dixboro Road Shared Use Trail Phase 2 – Engineering Design Services

RC19-263 R. Green moved, B. Fuller seconded that upon the recommendation of the Director of Engineering/County Highway Engineer and the concurrence of the Managing Director, the Board hereby authorizes the Managing Director to sign a Purchase Order to Wade Trim Associates for the Engineering Design Services of the Dixboro Shared Use Trail Phase 2 project located in Ann Arbor Township, at a cost not to exceed \$138,402. Voice Vote: YEAS: 3 NAYS: 0 ABSENT: 0 ABSTAIN: 0 Motion Carried.

US-12 Transportation Improvement Study – Engineering Design Services

RC19-264 R. Green moved, B. Fuller seconded that upon the recommendation of the Director of Engineering/County Highway Engineer and the concurrence of the Managing Director, the Board hereby authorizes the Managing Director to sign a Purchase Order to OHM Advisors for the Engineering Services of the US-12 Transportation Improvement Study located in Ypsilanti Township, at a cost not to exceed \$120,691. Voice Vote: YEAS: 3 NAYS: 0 ABSENT: 0 ABSTAIN: 0 Motion Carried.

Ypsilanti Township – US-12/M-17 Road Improvement Agreement (Revised)

RC19-265 R. Green moved, B. Fuller seconded that upon the recommendation of the Director of Engineering / County Highway Engineer and the concurrence of the Managing Director, the Board hereby approves and authorizes the Chair and Managing Director to sign the Ypsilanti Township Road Improvement Agreement (Revised) for the improvement of US-12 between I-94 and Wiard Road and M-17 (Ecorse Rd) between Ford Boulevard and US-12 located in Section 11 of Ypsilanti Township. Voice Vote: YEAS: 3 NAYS: 0 ABSENT: 0 ABSTAIN: 0 Motion Carried.

Ypsilanti Township Agreement – Kewanee Street Traffic Calming Project

RC19-266 R. Green moved, B. Fuller seconded that upon the final approval from the Ypsilanti Township Board with the recommendation of the County Highway Engineer and the concurrence of the Managing Director, the Board hereby approves and authorizes the Chair and Managing Director to sign the Ypsilanti Township agreement for the design and administration of the construction of two (2) speed humps on Kewanee Street between Packard Road and Washtenaw Avenue at the estimated cost of \$16,961.50. Voice Vote: YEAS: 3 NAYS: 0 ABSENT: 0 ABSTAIN: 0 Motion Carried.

Wagner Road Safety Project – Preliminary Engineering Services Agreement

RC19-267 R. Green moved, B. Fuller seconded that upon the recommendation of the Director of Engineering and the concurrence of the Managing Director, the Board hereby authorizes the Managing Director to sign the contract with Fishbeck, Thompson, Carr & Huber, Inc. for the Preliminary Engineering of the Wagner Road Safety Project, at a cost not to exceed \$75,000. Voice Vote: YEAS: 3 NAYS: 0 ABSENT: 0 ABSTAIN: 0 Motion Carried.

Run Tough for Chad Tough Foundation 1 Mile & 5K Run – Road Closure

RC19-268 R. Green moved, B. Fuller seconded that upon the recommendation of the County Highway Engineer and the concurrence of the Managing Director, the Board hereby approves the closure of the following roads on Saturday, September 28, 2019, for the Annual Run Tough for Chad Tough 1 Mile and 5K Run from 8:30 a.m. – 10:30 a.m.:

- Campus Parkway between Industrial Drive and Community Drive
- Community Drive between Campus Parkway and Bicentennial Parkway
- Bicentennial Parkway between Community Drive and Wilson Road
- Wilson Road – the section between Bicentennial Parkway

Voice Vote: YEAS: 3 NAYS: 0 ABSENT: 0 ABSTAIN: 0 Motion Carried.

Chelsea Fair Parade – Road Closure

RC19-269 R. Green moved, B. Fuller seconded that upon the recommendation of the County Highway Engineer and the concurrence of the Managing Director, the Board hereby approves the closure of the following road on Saturday, August 27, 2019 for the Annual Chelsea Fair Parade:

- Old US-12 from M-52 to Wilkinson Street - 12:45 p.m. to 3:00 p.m.

Voice Vote: YEAS: 3 NAYS: 0 ABSENT: 0 ABSTAIN: 0 Motion Carried.

2019-2020 Winter Maintenance Guidelines

RC19-270 R. Green moved, B. Fuller seconded that upon the recommendation of the Director of Operations and the concurrence of the Managing Director, the Board hereby approves the 2019-2020 Winter Maintenance Guidelines. Voice Vote: YEAS: 3 NAYS: 0 ABSENT: 0 ABSTAIN: 0 Motion Carried.

2020 Capital Equipment Purchase – 2020 International HV613 Truck Chassis

RC19-271 R. Green moved, B. Fuller seconded that upon the recommendation of the Director of Operations and the concurrence of the Managing Director, the Board hereby approves the purchase from Tri-County International Trucks, Inc., 3001 E. High Street, Jackson, Michigan, 49203 through the State of Michigan MIDEAL purchasing program of three (3) new model year 2020 International HV613 truck chassis for the total cost of \$335,622.00. Voice Vote: YEAS: 3 NAYS: 0 ABSENT: 0 ABSTAIN: 0 Motion Carried.

2020 Capital Equipment Purchase – Wheel Loader

RC19-272 R. Green moved, B. Fuller seconded that upon the recommendation of the Director of Operations and the concurrence of the Managing Director, the Board hereby approves the purchase from Michigan CASE, 24800 Novi Road, Novi, Michigan, 48375 through the State of Michigan MIDEAL purchasing program of a 2020 Caterpillar 950M HL Wheel Loader for the net cost after trade-in of \$249,672.00 through the State of Michigan MIDEAL purchasing program. Voice Vote: YEAS: 3 NAYS: 0 ABSENT: 0 ABSTAIN: 0 Motion Carried.

2020 Capital Equipment Purchase – Self Propelled Broom

RC19-273 R. Green moved, B. Fuller seconded that upon the recommendation of the Director of Operations and the concurrence of the Managing Director, the Board hereby approves the purchase from AIS Construction Equipment, 3600 North Grand River Avenue, Lansing, Michigan, 48906 through the State of Michigan MIDEAL purchasing program of a new Broce RCT-350 Rear Engine Self Propelled Broom for the total cost of \$60,329.25. Voice Vote: YEAS: 3 NAYS: 0 ABSENT: 0 ABSTAIN: 0 Motion Carried.

2020 Capital Equipment Purchase – Chip Spreader

RC19-274 R. Green moved, B. Fuller seconded that upon the recommendation of the Director of Operations and the concurrence of the Managing Director, the Board hereby approves the purchase from AIS Construction Equipment, 3600 North Grand River Avenue, Lansing, Michigan, 48906 through the State of Michigan MIDEAL purchasing program of a new factory ordered Etnyre 4WD Chip Spreader for the total cost of \$346,752.00. Voice Vote: YEAS: 3 NAYS: 0 ABSENT: 0 ABSTAIN: 0 Motion Carried.

2020 Capital Equipment Purchase – Pneumatic Tire Rollers

RC19-275 R. Green moved, B. Fuller seconded that upon the recommendation of the Director of Operations and the concurrence of the Managing Director, the Board hereby approves the purchase from AIS Construction Equipment, 3600 North Grand River Avenue, Lansing, Michigan, 48906 through the State of Michigan MIDEAL purchasing program of two (2) new Hamm GRW 180i-10 Pneumatic Tire Rollers for the total cost of \$425,666.00. Voice Vote: YEAS: 3 NAYS: 0 ABSENT: 0 ABSTAIN: 0 Motion Carried.

2020 Capital Equipment Purchase – Tar Distributor

RC19-276 R. Green moved, B. Fuller seconded that upon the recommendation of the Director of Operations and the concurrence of the Managing Director, the Board hereby approves the purchase from AIS Construction Equipment, 3600 North Grand River Avenue, Lansing, Michigan, 48906 through the State of Michigan MIDEAL purchasing program of a new factory ordered Empire 4,000 Gallon Centennial Distributor for the total cost of \$146,740.00. Voice Vote: YEAS: 3 NAYS: 0 ABSENT: 0 ABSTAIN: 0 Motion Carried.

2020 Capital Equipment Purchase – Western Star 4700 Set-Back Front Axle Chassis

RC19-277 R. Green moved, B. Fuller seconded that upon the recommendation of the Director of Operations and the concurrence of the Managing Director, the Board hereby approves the purchase from D&K Truck Company, 3020 Snow Road, Lansing, Michigan, 48917 through the State of Michigan MIDEAL purchasing program for a new model year 2020 Western Star 4700 truck cab and chassis for the total cost of \$126,957.00. Voice Vote: YEAS: 3 NAYS: 0 ABSENT: 0 ABSTAIN: 0 Motion Carried.

2020 Capital Equipment Purchase Authorization – Four Western Star 4700 SB Truck Cab/Chassis

RC19-278 R. Green moved, B. Fuller seconded that upon the recommendation of the Director of Operations and the concurrence of the Managing Director, the Board hereby approves the purchase from D & K Truck Company, 3020 Snow Road, Lansing, Michigan, 48917 through the State of Michigan MIDEAL purchasing program of four (4) new model year 2021 Western Star 4700SB truck cab and chassis for the total cost of \$486,060.00. Voice Vote: YEAS: 3 NAYS: 0 ABSENT: 0 ABSTAIN: 0 Motion Carried.

2020 Capital Equipment Purchase Authorization – Four Western Star 4700SB Truck Upfitting

RC19-279 R. Green moved, B. Fuller seconded that upon the recommendation of the Director of Operations and the concurrence of the Managing Director, the Board hereby approves the purchase from Truck & Trailer Specialties, Inc., 1200 Victory Drive, Howell, Michigan, 48843 through the City of Rochester Hills MITN Purchasing Cooperative Member Service Agreement of component upfitting for four (4) new model year 2021 Western Star 4700SB truck cab and chassis for the total cost of \$640,503.00. It is understood that a 2% discount of the total price will be reimbursed to the Road Commission at time of invoice provided payment is received by Truck & Trailer within 30 days. Voice Vote: YEAS: 3 NAYS: 0 ABSENT: 0 ABSTAIN: 0 Motion Carried.

Installment Purchase (4) Four Heavy Trucks

RC19-280 R. Green moved, B. Fuller seconded

WHEREAS, the Board of County Road Commissioners of the County of Washtenaw, Michigan (the "Road Commission") determines it to be necessary for the public health, safety and welfare of its residents to purchase and equip four (4) heavy duty trucks as described in Exhibit A attached hereto and made a part hereof (the "Equipment"); and

WHEREAS, under the provisions of Act 283, Public Acts of Michigan, 1909, as amended ("Act 283"), the Road Commission is authorized to enter into any contracts or agreements for the purchase of property or equipment for public purposes, to be paid in installments over a period of not to exceed the useful life of the property acquired as determined by resolution of the Road Commission; and

WHEREAS, the Road Commission has solicited quotes for the financing of the Equipment; and

WHEREAS, quotes have been received, and it has been determined that the proposal of Chelsea State Bank (the "Bank") is the most advantageous to the Road Commission; and

WHEREAS, an Installment Purchase Agreement (the "Agreement") between the D & K Truck Company and Truck & Trailer Specialties, Inc. (each, a "Vendor" and together the "Vendors"), and the Bank, for the purchase of the Equipment has been prepared; and

WHEREAS, the Agreement is to be assigned to the Bank.

NOW, THEREFORE, BE IT RESOLVED THAT:

1. Approval of Agreement. The Agreement is hereby approved substantially in the form attached hereto at Exhibit B. The Road Commission shall incur the debt described in the Agreement through execution of the Agreement by the officers authorized below which debt shall consist of the principal financed amount of not to exceed Eight Hundred Ninety Thousand Two Hundred Eighty-Three Dollars (\$890,283) which shall be payable in not to exceed sixty (60) monthly payments of principal and interest, commencing February 1, 2020 or such other dates and/or payment frequency as the officers shall determine, at the rate of 2.30% per annum. Payments due under the Agreement shall be subject to prepayment prior to maturity, in whole or in part, at the option of the Road Commission, on any date, without premium, with thirty (30) days written notice to the Bank.
2. Execution and Delivery of Agreement. The Chair and Clerk are hereby authorized and directed to execute the Agreement and deliver it to the Vendors, substantially in the form attached hereto with such additions, changes and modifications as shall be reasonably necessary, provided such changes shall not be materially detrimental to the Road Commission.
3. Useful Life of Equipment. The useful life of the Equipment is hereby determined to be not less than five (5) years.
4. Authorization of Officers. The Chair, Clerk, Managing Director, and Director of Finance and IT are each hereby authorized and directed to execute such additional documentation and open such accounts as shall be necessary to effectuate the closing of the Agreement and the assignment thereof.
5. Assignment of Agreement. The assignment of the Agreement by each Vendor to the Bank as the assignee of each Vendor is hereby approved.
6. Security. The Road Commission hereby agrees to include in its budget for each year commencing with the current fiscal year, a sum which will be sufficient to pay the principal of and interest on the Agreement coming due before the next fiscal year. In addition, the Equipment shall serve as collateral and security for the payments to be received pursuant to the Agreement and a statutory lien is hereby created in favor of the bank or financial institution as assignee under the Agreement.

7. Tax Covenant. The Road Commission hereby covenants that, to the extent permitted by law, it shall take all actions within its control necessary to maintain the exemption of the interest on the obligations under the Agreement from general federal income taxation (as opposed to alternative minimum or other indirect taxation) under the Internal Revenue Code of 1986, as amended, including but not limited to, actions relating to the rebate of arbitrage earnings, if applicable, and the expenditure and investment of proceeds of the Agreement and moneys deemed to be proceeds.

8. Qualified Tax Exempt Obligations. The Road Commission hereby designates the Agreement as a “qualified tax-exempt obligation” for purposes of deduction of interest expense by financial institutions under the provisions of the Internal Revenue Code of 1986, as amended.

9. Authorization to Adjust Terms; Solicitation of Proposals; Award of Financing. The Chair, Clerk, Managing Director and Director of Finance and IT are each hereby authorized to adjust the final details set forth herein to the extent necessary or convenient to complete the transaction authorized herein, and in pursuance of the foregoing are authorized to make determinations regarding the principal and interest payment dates, frequency, maturity, and redemption provisions. The final terms of the Agreement shall be evidenced through execution of the Agreement by the Chair and Clerk.

10. Repealer. All resolutions and parts of resolutions insofar as they conflict with the provisions of this resolution and the same hereby are rescinded.

Voice Vote: YEAS: 3 NAYS: 0 ABSENT: 0 ABSTAIN: 0 Motion Carried.

2019 Second Quarter Budget Amendments

RC19-281 R. Green moved, B. Fuller seconded that upon the recommendation of the Director of Finance and IT and the concurrence of the Managing Director, the Board hereby approves the 2019 Second Quarter Budget amendments as presented. Voice Vote: YEAS: 3 NAYS: 0 ABSENT: 0 ABSTAIN: 0 Motion Carried.

Debt Service – SAD Bond Issue

RC19-282 R. Green moved, B. Fuller seconded the Board hereby approves Voucher 362-201902 totaling \$13,397.60 for Debt Service SAD Bond Issues. Voice Vote: YEAS: 3 NAYS: 0 ABSENT: 0 ABSTAIN: 0 Motion Carried.

Payroll & Bills for July 24, 2019

RC19-283 R. Green moved, B. Fuller seconded the Board hereby approves Voucher 10360 totaling \$309,028.02 for payroll of July 24, 2019, and Voucher 10361 totaling \$2,883,853.46 in payment of bills for July 24, 2019. Voice Vote: YEAS: 3 NAYS: 0 ABSENT: 0 ABSTAIN: 0 Motion Carried.

ACTION ITEM**CRASIF 2019 Board of Trustees Election**

RC19-284 R. Green moved, B. Fuller seconded the Washtenaw County Board of Road Commissioners hereby approves John Hunt, of Huron County Road Commission and Jerry Smigelski, of Presque Isle County Road Commission for the two three-year at-large positions and Mary Sholander of Marquette County Road Commission for the Upper Peninsula Road Builders Association position.

Voice Vote: YEAS: 3 NAYS: 0 ABSENT: 0 ABSTAIN: 0 Motion Carried.

DISCUSSION ITEM**Napier Road Establishing Speed Limit**

Sheryl Siddall, Managing Director, provided a review of the Michigan Vehicle Code specifying that the Road Commission can post a speed limit along Napier Road. The access points have been counted at this location. Sheryl stated that the Board is not required to act on this. The Road Commission will file a Traffic Control Order with the County Clerk's Office establishing a 45mph speed limit on Napier Road from North Territorial Road to a point one-half mile north of North Territorial Road.

REPORTS**COUNTY COMMISSIONER REPORT**

Ruth Ann Jannick thanked the Board for the sympathy card on the passing of her daughter.

ROAD COMMISSIONER REPORTS**Commissioner Doug Fuller**

The Border to Border trail ribbon cutting ceremony will be on August 27, 2019.

Commissioner Fuller attended the Southeast Council meeting on August 5th. Commissioner Fuller reported that there was discussion on various counties considering withdrawing their maintenance contracts with MDOT at both the SE Council meeting and the MCRCSIP annual meeting.

Commissioner Barb Fuller

Commissioner Barb Fuller attended the following meetings:

- 7/22 WCRC Working Session
- 7/23 Non-Motorized Trail from Watkins Lake State Park to Manchester Village
- 7/24 Impact of legislation regarding 5G and ROW access at WCRC
- 8/5 SE Council Meeting at WCRC office

Commissioner Rod Green

Commissioner Rod Green attended the following meetings:

- 7/22 WCRC Working Session
- 7/25 SEMCOG Executive Committee meeting
- 8/5 SE Council Meeting at WCRC office

MANAGING DIRECTOR'S REPORT**Sheryl Siddall, Managing Director**

Sheryl Siddall recognized Nicole Peterson, Human Resources Manager, for reaching out to the Michigan Veterans Affairs Agency regarding hiring veterans and receiving the Veterans Bronze Star status.

There will be a County Board of Commissioners Roads Funding Subcommittee meeting on Thursday, 8/15 @ 8:00a.m. WCRC staff will be present to provide information on extending the county wide millage program.

OPERATIONS REPORT**Jim Harmon, Superintendent of Maintenance**

- Jim Harmon thanked the Board for approval of the purchase of various equipment and provided a review of how this equipment is used. Jim stated that there are several pieces of equipment that have failed and are in for repair.
- The WCRC will be hosting the SEMCOG Winter Maintenance Workshop on September 19, 2019 at the WCRC Northeast Service Center.
- Jim provided a review of the operations work schedule sheet.

FINANCE & IT REPORT**Dan Ackerman, Director of Finance & IT****Finance Report**

- Dan Ackerman reported that we have successfully paid two vendors electronically. We are the first Road Commission to pay vendors electronically in this manner. Dan acknowledged Tracy Balkwell for her work in assisting in getting this program launched.
- Oakland County Road Commission will be moving to Precision software. They will have a site visit to WCRC to see how we work with Precision software and electronic time keeping.
- Dan thanked the Board for approving the installment purchase for four trucks.
- Public Act 202 – the State of Michigan has asked for some additional information.
- Staff is working on census information for the 2018 OPEB report.

IT

- In a few years, Microsoft will no longer support Skype. We are looking at Team software to replace Skype.
- An IT Intern was hired to assist in the IT department.
- We have received the digital signage PC's and will be setting those up. This is a way to communicate with staff and the yards.
- A cautionary message was added to all external emails to ensure you know who the email sender is.

ENGINEERING REPORT**Matt MacDonell, Director of Engineering**

- Zeeb Road is now re-opened after paving.
- Grove Road – the sheeting installation is complete which will stop the infrastructure from sliding any further. Staff is working with OHM and Dan's Excavating to address the outletting of the drainage. We will be working with the township on this. We are also coordinating with YCUA.
- Textile Road – the paving was complete yesterday. There is continuing work on shoulders, restoration and signals.
- Lehman Road – estimates were received on culvert options. The chosen culvert was an aluminum box culvert at a cost of approximately \$100,000. Matt MacDonell will contact Peter Psarouthakis, Sharon Township Supervisor regarding this.
- Saline-Milan Road – the removal of existing structure is complete. The Sub-contractor is on site this week.
- The Border to Border project on Iron River Drive is progressing well.

EXECUTIVE SESSION**Mote, et al vs. WCRC**

RC19-285 B. Fuller moved, R. Green seconded to enter into Executive Session at approximately 2:14 p.m. to discuss the case of Appeal of Mote, et al vs. WCRC.

Roll Call Vote:

YEAS: D. Fuller, B. Fuller, R. Green

NAYS: None

ABSENT: None

ABSTAIN: None

Motion Carried.

RC19-286 R. Green moved, B. Fuller seconded to exit Executive Session at approximately 4:09 p.m.

Roll Call Vote:

YEAS: D. Fuller, B. Fuller, R. Green

NAYS: None

ABSENT: None

ABSTAIN: None

Motion Carried.

ADJOURNMENT

RC19-287 B. Fuller moved, R. Green seconded to adjourn the August 6, 2019 meeting at 4:09 p.m. Voice Vote: YEAS: 3 NAYS: 0 ABSENT: 0 ABSTAIN: 0 Motion Carried.

Douglas E. Fuller, Chair

Sheryl Soderholm Siddall, Deputy Clerk

Minutes Approved: _____

DRAFT

COMMISSIONERS
DOUGLAS E. FULLER
CHAIR
BARBARA RYAN FULLER
VICE-CHAIR
RODRICK K. GREEN
MEMBER

**WASHTENAW COUNTY
BOARD OF COUNTY ROAD COMMISSIONERS**
555 NORTH ZEEB ROAD
ANN ARBOR, MICHIGAN 48103
WWW.WCROADS.ORG
TELEPHONE (734) 761-1500
FAX (734) 761-3737

SHERYL SODERHOLM SIDDALL, P.E.
MANAGING DIRECTOR
MATTHEW F. MACDONELL, P.E.
DIRECTOR OF ENGINEERING
COUNTY HIGHWAY ENGINEER
JAMES D. HARMON, P.E.
DIRECTOR OF OPERATIONS
DANIEL D. ACKERMAN
DIRECTOR OF FINANCE & IT

TO: Washtenaw County Board of County Road Commissioners
FROM: Sheryl Soderholm Siddall, Managing Director
DATE: August 20, 2019
SUBJECT: **Written Communications for August 20, 2019 Board Meeting**

WRITTEN COMMUNICATIONS

ISSUED: August 14, 2019
WHERE: Waters Road; Meadow Lane Road; Blue Grass Lane; Prairie Road
TOWNSHIP: Lodi
WHY: Preventative maintenance – chip seal
WHEN: Thursday, August 15, 2019
CONTACT: Ken Harris, Superintendent of Maintenance

ISSUED: August 14, 2019
WHERE: Textile Road, Hereford Road, Lodi Lane
TOWNSHIP: Lodi and Pittsfield
WHY: Preventative maintenance – chip seal
WHEN: Wednesday, August 14, 2019
CONTACT: Ken Harris, Superintendent of Maintenance

ISSUED: August 13, 2019
WHERE: Textile Road, Hereford Road, Lodi Lane
TOWNSHIP: Lodi and Pittsfield
WHY: Preventative maintenance – chip seal
WHEN: Wednesday, August 14, 2019
CONTACT: Ken Harris, Superintendent of Maintenance

ISSUED: August 13, 2019
WHERE: Saline-Milan Road between Moon Road and Judd Road
TOWNSHIP: York
WHY: Preventative maintenance – chip seal
WHEN: Wednesday, August 14, 2019
CONTACT: Ken Harris, Superintendent of Maintenance

ISSUED: August 9, 2019
WHERE: Joy Road between Mast Road and Zeeb Road
TOWNSHIP: Webster and Scio
WHY: Joy Road open – completion of road improvement project
WHEN: Friday, August 9, 2019
CONTACT: Mike Bernbeck, Project Manager

ISSUED: August 9, 2019
WHERE: Carpenter Road between the City of Milan border and Textile Road
TOWNSHIP: York and Pittsfield
WHY: Preventative maintenance – chip seal – Carpenter Road closed
WHEN: Monday, August 12, 2019
CONTACT: Ken Harris, Superintendent of Maintenance

ISSUED: August 9, 2019
WHERE: Hawthorn Ridge Subdivision
TOWNSHIP: Pittsfield
WHY: Road resurfacing: Tiger Lily Drive and Court; Moss Rose Court; Delilah Drive; Alder Court; Apple Ridge Drive; Honeysuckle Drive
WHEN: Monday, August 12, 2019
CONTACT: Mike Bernbeck, Project Manager

ISSUED: August 7, 2019
WHERE: Bunton Road between Willis Road and Textile Road – Augusta and Ypsilanti Townships
Tuttle Hill Road between Martz Road and Huron River Drive – Ypsilanti Township
WHY: Preventative maintenance – chip seal
WHEN: Thursday, August 8, 2019
CONTACT: Ken Harris, Superintendent of Maintenance

ISSUED: August 6, 2019
WHERE: Clark Road between Leforge Road and Ridge Road
TOWNSHIP: Ypsilanti and Superior
WHY: Preventative maintenance – chip seal
WHEN: Wednesday, August 7, 2019
CONTACT: Ken Harris, Superintendent of Maintenance

ISSUED: August 6, 2019
WHERE: York Township Hall, 11560 Stony Creek Road, Milan
TOWNSHIP: York
WHY: Construction Open House – Ridge Road and Hack Road Intersection Improvement Project.
WHEN: Monday, August 19, 2019
CONTACT: Brent Schlack, Assistant Director of Engineering

ISSUED: August 1, 2019
WHERE: Currie Road between Six Mile Road and Eight Mile Road
TOWNSHIP: Salem
WHY: Preventative maintenance – chip seal
WHEN: Monday, August 5, 2019
CONTACT: Adam Lape, Superintendent of Maintenance



Washtenaw County Road Commission
555 N. Zeeb Road
Ann Arbor, Michigan 48103

DAYTIME ROAD CLOSURE ADVISORY

WHEN: Thursday, August 15, 2019

WHERE: The following roads in Lodi Township –

- Waters Road between Wagner Road and Maple Road
- Meadow Lane between the end of road and Ann Arbor-Saline Road
- Blue Grass Lane between Prairie Road and Blue Grass Court
- Prairie Road, north of Blue Grass Lane

WHY: Preventative maintenance – chip seal

BACKGROUND: On Thursday, August 15, 2019, the Washtenaw County Road Commission (WCRC) will close the following roads in Lodi Township for preventative maintenance:

- Waters Road between Wagner Road and Maple Road
- Meadow Lane between the end of road and Ann Arbor-Saline Road
- Blue Grass Lane between Prairie Road and Blue Grass Court
- Prairie Road, north of Blue Grass Lane

The road improvements are expected to take approximately one day. However, all dates are tentative and subject to change due to weather conditions.

Once the project is complete, drivers are advised to lower their speeds to 35 mph while the stone settles.

CONTACT: If you have any questions concerning this work, please contact Ken Harris, superintendent of maintenance, (734) 327-6696 or via email at harrisk@wccroads.org

ISSUE DATE: 08/14/19



Washtenaw County Road Commission
555 N. Zeeb Road
Ann Arbor, Michigan 48103

DAYTIME ROAD CLOSURE ADVISORY

WHEN: Wednesday, August 14, 2019

WHERE: The following roads in Lodi and Pittsfield Townships -

- Textile Road between Ann Arbor-Saline Road and Maple Road in Lodi and Pittsfield Townships
- Hereford Road between Wagner Road and the Lodi Township Line
- Lodi Lane between Weber Road and Hereford Road in Lodi Township

WHY: Preventative maintenance – chip seal

BACKGROUND: On Wednesday, August 14, 2019, the Washtenaw County Road Commission (WCRC) will close the following roads in Lodi and Pittsfield Townships for preventative maintenance:

- Textile Road between Ann Arbor-Saline Road and Maple Road in Lodi and Pittsfield Townships
- Hereford Road between Wagner Road and the Lodi Township Line in Lodi Township
- Lodi Lane between Weber Road and Hereford Road in Lodi Township

The road improvements are expected to take approximately one day. However, all dates are tentative and subject to change due to weather conditions.

Once the project is complete, drivers are advised to lower their speeds to 35 mph while the stone settles.

CONTACT: If you have any questions concerning this work, please contact Ken Harris, superintendent of maintenance, (734) 327-6696 or via email at harrisk@wcroads.org

ISSUE DATE: 08/13/19



Washtenaw County Road Commission
555 N. Zeeb Road
Ann Arbor, Michigan 48103

DAYTIME ROAD CLOSURE ADVISORY

WHEN: Wednesday, August 14, 2019

WHERE: Saline-Milan Road between Moon Road and Judd Road in York Township

WHY: Preventative maintenance – chip seal

BACKGROUND: On Wednesday, August 14, 2019, the Washtenaw County Road Commission (WCRC) will close Saline-Milan Road between Moon Road and Judd Road in York Township for preventative maintenance.

The road improvements are expected to take approximately one day. However, all dates are tentative and subject to change due to weather conditions.

Once the project is complete, drivers are advised to lower their speeds to 35 mph while the stone settles.

CONTACT: If you have any questions concerning this work, please contact Ken Harris, superintendent of maintenance, (734) 327-6696 or via email at harrisk@wcroads.org

ISSUE DATE: 08/13/19

###



Washtenaw County Road Commission
555 N. Zeeb Road
Ann Arbor, Michigan 48103

ADVISORY – ROAD OPENING

- WHEN:** Effective Friday, August 9, 2019
- WHERE:** Joy Road between Mast Road and Zeeb Road on the border of Webster and Scio Townships
- WHY:** Completion of road improvement project
- BACKGROUND:** On Friday, August 9, 2019, the Washtenaw County Road Commission (WCRC) re-opened Joy Road between Mast Road and Zeeb Road on the border of Webster and Scio Townships.
- CONTACT:** If you have any questions concerning this project, please contact Mike Bernbeck, project manager, (734) 327-6654 or bernbeckm@wcroads.org
- For more information about WCRC road closures and re-openings visit wcroads.org/news-resources/road-work-advisories/.
- ISSUE DATE:** 08/09/19

###



Washtenaw County Road Commission
555 N. Zeeb Road
Ann Arbor, Michigan 48103

DAYTIME ROAD CLOSURE ADVISORY

- WHEN:** Starting Monday, August 12, 2019
- WHERE:** Carpenter Road between the City of Milan border and Textile Road in York and Pittsfield Townships
- WHY:** Preventative maintenance – chip seal
- BACKGROUND:** On Monday, August 12, 2019, the Washtenaw County Road Commission (WCRC) will close Carpenter Road between the City of Milan border and Textile Road in York and Pittsfield Townships for preventative maintenance.
- The road improvements are expected to take approximately one day. However, all dates are tentative and subject to change due to weather conditions.
- Once the project is complete, drivers are advised to lower their speeds to 35 mph while the stone settles.
- CONTACT:** If you have any questions concerning this work, please contact Ken Harris, superintendent of maintenance, (734) 327-6696 or via email at harrisk@wccroads.org
- For more information about WCRC road closures visit wccroads.org/news-resources/road-work-advisories/.
- ISSUE DATE:** 08/09/19

###



Washtenaw County Road Commission

555 N. Zeeb Road
Ann Arbor, Michigan 48103

ROAD WORK ADVISORY

- WHEN:** Starting Monday, August 12, 2019
- WHERE:** Hawthorne Ridge Subdivision in Pittsfield Township
- WHY:** Road resurfacing
- BACKGROUND:** On Monday, August 12, 2019, the Washtenaw County Road Commission (WCRC) will begin a road resurfacing project in the Hawthorne Ridge Subdivision in Pittsfield Township.

The following roads will be impacted:

- Tiger Lily Drive and Court, north of Ann Arbor-Saline Road
- Moss Rose Court, east of Tiger Lily Lane
- Delilah Drive between Honeysuckle Drive and end of road
- Alder Court east of Tiger Lily Drive
- Apple Ridge Drive between Honeysuckle Drive and Waters Road
- Honeysuckle Drive between Apple Ridge Drive and end of road

The roads will not be closed to traffic, but delays are likely due to lane restrictions. WCRC encourages motorists, emergency services and others to use an alternate route. Sidewalks may be impacted by this work in certain areas.

The road improvements are expected to take approximately three days. However, all dates are tentative and subject to change due to weather conditions.

CONTACT: If you have any questions concerning this work, please contact Mike Bernbeck, project manager, (734) 327-6654, or via email at bernbeckm@wccroads.org

For more information about WCRC road closures visit wccroads.org/news-resources/road-work-advisories/.

ISSUE DATE: 08/09/19



Washtenaw County Road Commission
555 N. Zeeb Road
Ann Arbor, Michigan 48103

ROAD CLOSURE ADVISORY

WHEN: Thursday, August 8, 2019

WHERE: Bunton Road between Willis Road and Textile Road in Augusta and Ypsilanti Townships

AND

Tuttle Hill Road between Martz Road and Huron River Drive in Ypsilanti Township

WHY: Preventative maintenance – chip seal

BACKGROUND: On Thursday, August 8, 2019, the Washtenaw County Road Commission (WCRC) will close **Bunton Road** between Willis Road and Textile Road in Augusta and Ypsilanti Townships AND **Tuttle Hill Road** between Martz Road and Huron River Drive in Ypsilanti Township.

The road improvements are expected to take approximately one day. However, all dates are tentative and subject to change due to weather conditions.

Once the project is complete, drivers are advised to lower their speeds to 35 mph while the stone settles.

CONTACT: If you have any questions concerning this work, please contact Ken Harris, superintendent of maintenance, (734) 327-6696 or via email at harrisk@wcroads.org

For more information about WCRC road closures visit wcroads.org/news-resources/road-work-advisories/.

ISSUE DATE: 08/07/19

###



STATE OF MICHIGAN
DEPARTMENT OF TRANSPORTATION
LANSING

GRETCHEN WHITMER
GOVERNOR

PAUL AJEGBA
DIRECTOR

August 1, 2019

Mr. Douglas Fuller, Chair
Washtenaw County Road Commission
555 N. Zeeb Road
Ann Arbor, Michigan 48103

Dear Mr. Fuller,

Your Annual Act 51 Mileage Certification submittal has been processed.

Your request to abandon a portion of Scully Road is approved, resulting in a 0.75-mile decrease in your County Local Mileage.

Your certified mileages as of July 1, 2019 are:

| | |
|-------------|---------|
| County Wide | |
| Primary: | 593.14 |
| Local: | 1058.67 |
| Urban | |
| Primary: | 269.05 |
| Local: | 456.60 |

If you have any questions or if I can be of any additional assistance, please contact me at (517) 335-2913.

Sincerely,

Alex LaPorte Alex LaPorte
Jul 30 2019 3:49 PM

Alex LaPorte
Transportation Planner – Act 51
Data Inventory & Integration Division
Bureau of Transportation Planning

cc: Wendi Burton, Administrator, Data Inventory & Integration Division
Patrick Allen, Act 51 Engineer, Data Inventory & Integration Division
Allen Squire, Washtenaw County Road Commission



Washtenaw County Road Commission
555 N. Zeeb Road
Ann Arbor, Michigan 48103

DAYTIME ROAD CLOSURE ADVISORY

WHEN: Starting Wednesday, August 7, 2019

WHERE: Clark Road between Leforge Road and Ridge Road in Ypsilanti and Superior Townships

WHY: Preventative maintenance – chip seal

BACKGROUND: On Wednesday, August 7, 2019, the Washtenaw County Road Commission (WCRC) will close Clark Road between Leforge Road and Ridge Road in Ypsilanti and Superior Townships for preventative maintenance.

The road improvements are expected to take approximately one day. However, all dates are tentative and subject to change due to weather conditions.

Once the project is complete, drivers are advised to lower their speeds to 35 mph while the stone settles.

CONTACT: If you have any questions concerning this work, please contact Ken Harris, superintendent of maintenance, (734) 327-6696 or via email at harrisk@wcroads.org

For more information about WCRC road closures visit wcroads.org/news-resources/road-work-advisories/.

ISSUE DATE: 08/06/19

###



Washtenaw County Road Commission
555 N. Zeeb Road
Ann Arbor, Michigan 48103

CONSTRUCTION OPEN HOUSE NOTICE

- WHAT:** Ridge Rd and Hack Rd Intersection Improvement Project
- WHEN:** Monday, August 19, 2019, from 6:30 p.m. to 7:30 p.m.
- WHERE:** York Township Hall, 11560 Stony Creek Rd, Milan
- WHY:** The Washtenaw County Road Commission (WCRC) will hold a construction open house to provide information and answer questions about the Ridge Rd and Hack Rd Intersection Improvement Project.

The open house will be held at the York Township Hall, 11560 Stony Creek Rd, Milan, on Monday, August 19, 2019, from 6:30 p.m. to 7:30 p.m. There will not be a formal presentation at this meeting, WCRC staff will be there to answer questions and show project information in an open house format.

Construction is expected to begin this October. During this project WCRC, in partnership with the Monroe County Road Commission, will make the following improvements:

- Realign intersections of Ridge Rd and Hack Rd and at Westfall Rd
- Wedging of the Ridge Rd curve and installing of a high friction surface
- Installing centerline and shoulder rumble strips on the curve
- Paving shoulders along the curve
- Paving the gravel road approaches

CONTACT: If you have any questions concerning this project, please contact Brent Schlack, assistant director of engineering, schlackb@wcroads.org, (734) 327-6670. [Click here to visit the project page and subscribe to receive project updates via email.](#)

WCRC will provide necessary reasonable auxiliary aids and services, such as signers for the hearing impaired and audiotapes or printed material being considered at the meeting, to individuals with disabilities upon a 7-business day notice to WCRC. Individuals with disabilities requiring auxiliary aids or services should contact Emily Kizer, communications manager, kizere@wcroads.org, phone (734) 327-6646, fax (734) 761-3737 or mail at WCRC, 555 N. Zeeb Road, Ann Arbor, MI 48103.

ISSUE DATE: 08/06/2019



Washtenaw County Road Commission
555 N. Zeeb Road
Ann Arbor, Michigan 48103

DAYTIME ROAD CLOSURE ADVISORY

WHEN: Monday, August 5, 2019

WHERE: Currie Road between Six Mile Road and Eight Mile Road in Salem Township

WHY: Preventative maintenance – chip seal

BACKGROUND: On Monday, August 5, 2019, the Washtenaw County Road Commission (WCRC) will chip seal Currie Road between Six Mile Road and Eight Mile Road in Salem Township.

WCRC will also finish the chip seal work remaining on Curtis Road between Plymouth Road and 6 Mile Road in Salem and Superior Townships.

The road improvements are expected to take approximately one day. However, all dates are tentative and subject to change due to weather conditions.

Once the project is complete, drivers are advised to lower their speeds to 35 mph while the stone settles.

CONTACT: If you have any questions concerning this work, please contact Adam Lape, superintendent of maintenance, (734) 327-6697 or via email at lapea@wcroads.org

For more information about WCRC road closures visit wcroads.org/news-resources/road-work-advisories/.

ISSUE DATE: 08/01/19

###

COMMISSIONERS
DOUGLAS E. FULLER
CHAIR
BARBARA RYAN FULLER
VICE-CHAIR
RODRICK K. GREEN
MEMBER

**WASHTENAW COUNTY
BOARD OF COUNTY ROAD COMMISSIONERS**
555 NORTH ZEEB ROAD
ANN ARBOR, MICHIGAN 48103
WWW.WCROADS.ORG
TELEPHONE (734) 761-1500
FAX (734) 761-3737

SHERYL SODERHOLM SIDDALL, P.E.
MANAGING DIRECTOR

MATTHEW F. MACDONELL, P.E.
DIRECTOR OF ENGINEERING
COUNTY HIGHWAY ENGINEER

JAMES D. HARMON, P.E.
DIRECTOR OF OPERATIONS

DANIEL D. ACKERMAN
DIRECTOR OF FINANCE & IT

MEMO TO: Washtenaw County Board of County Road Commissioners
THROUGH: Sheryl Soderholm Siddall, P.E.
Managing Director
DATE: August 20, 2019
SUBJECT: **NEW BUSINESS ITEMS FOR AUGUST 20, 2019 BOARD MEETING**

A. CONSENT ITEMS

1. Retirement Resolution of Public Service – Kent J. Hopkins

Staff is requesting the Board present Kent J. Hopkins, Facilities Supervisor, a Retirement Resolution of Public Service. Mr. Hopkins began his full-time employment with the Washtenaw County Road Commission on March 3, 1994, as a Heavy Truck Driver on the state trunkline crew. After two and half years, he successfully bid and transferred to the Shop as a Welder/Mechanic. Then a year later, he successfully bid and transferred to the Buildings & Grounds crew as a facilities worker. Mr. Hopkins was promoted to Facilities Supervisor on December 18, 2013 and has served the Road Commission in that role to retirement.

Mr. Hopkins has been an invaluable source of knowledge and experience as an employee of the Road Commission for 25 years and has chosen to retire on August 14, 2019. Staff is requesting that the Board present Mr. Hopkins with a resolution to recognize, commend and thank him for his 25 years of outstanding, dedicated public service to the Road Commission, the traveling public and the citizens of Washtenaw County.

PROPOSED MOTION:

WHEREAS, Kent J. Hopkins has served as a valuable, full-time employee of the Washtenaw County Road Commission from March 3, 1994 through August 14, 2019; and has elected to retire on August 14, 2019 to enjoy time with his family and friends; and

WHEREAS Kent J. Hopkins has provided 25 years of faithful duty, knowledge and experience as a Heavy Truck Driver, Welder/Mechanic, Facilities Worker and as Facilities Supervisor, which has greatly benefited the Road Commission, the citizens of Washtenaw County and the traveling public; and

NOW THEREFORE BE IT RESOLVED, that we, the Washtenaw County Board of Road Commissioners, thank, acknowledge and commend Kent J. Hopkins for his dedicated service, and wish him continued good health, happiness, and success in all his future endeavors.

2. Textile Road at Woodland Drive – MDOT Contract 19-5403

Staff is requesting the Board to approve the MDOT Contract for the Textile Road at Woodland Drive project. The project consists of roundabout construction, which will include HMA paving, concrete curb and gutter, sidewalk, storm water management system, and the coordination/installation of DTE street lighting. The project is funded using federal, state and local funding sources: Federal Highway Safety Improvement Project Fund, Michigan Transportation Fund (MTF), and township participation. The estimated construction cost of the program is \$627,200, with the WCRC being responsible for its local matching share estimated to be \$153,829.70. The contract establishes roles for both parties and the funding percentages for each road segment shown in Exhibit I on page 8 of the Agreement. The WCRC's portion of the local match for the project is included in the 2019 WCRC budget.

PROPOSED MOTION: that upon the recommendation of the Director of Engineering/County Highway Engineer and the concurrence of the Managing Director, the Board hereby approves and authorizes the Chair and Managing Director to sign the MDOT Contract No. 19-5403 for the Textile Road at Woodland Drive project.

3. SAW Grant – Storm Structure Cleaning Contract Services

Staff is requesting the Board to approve a purchase order number 31510 amendment to United Resources, LLC in the amount of \$345,000 for storm structure cleaning services. These services will work in coordination with the current storm structure inspections being completed by Hubble Roth & Clark as part of the Stormwater, Asset Management, and Wastewater (SAW) grant. The approval of this purchase order amendment to the amount of \$345,000 will complete the structure cleaning for 2019. This amount is reimbursable through the SAW grant.

PROPOSED MOTION: that upon the recommendation of the Director of Engineering/ County Highway Engineer and concurrence of the Managing Director, the Board hereby approves the purchase order amendment to United Resources, LLC in the amount of \$345,000 to complete the storm structure cleaning for 2019 as part of the Stormwater, Asset Management, and Wastewater (SAW) grant.

4. Whitmore Lake High School Homecoming Parade – Road Closure

Staff is requesting the Board to approve the closure of Main Street for the Whitmore Lake High School Homecoming Parade on Friday October 11, 2019. The Whitmore Lake Area Schools annually hosts the Whitmore Lake High School Homecoming Parade with the consent and authorization from Northfield Township. Additionally, and pursuant to Michigan law (MCL §247.323), the Board of Road Commissioners must authorize the closure of roads under its jurisdiction for special events such as the Homecoming Parade. Area residents and motorists will be temporarily impacted during the road closures. The Northfield Public Safety Department shall be engaged to provide additional traffic control services.

PROPOSED MOTION: that upon the recommendation of the County Highway Engineer and the concurrence of the Managing Director the Board hereby approves the closure of the following road on Friday, October 11, 2019, for the Whitmore Lake High School Homecoming Parade from 3:45 p.m. – 5:45 p.m.:

- **Main Street from Barker Road to Seven Mile Road**

5. 905 E. Cross Street, Ypsilanti – Right of Way Sidewalk Easement

The 2017 Preventative Maintenance Program rehabilitated Cross Street between Harris Road and Prospect Road in Ypsilanti Township. During construction staff recognized a non-compliant ADA sidewalk ramp would require immediate replacement. Action was taken to install a compliant ADA ramp within the road right of way. Subsequently, a survey was performed acknowledging the sidewalk ramp was placed on private property. WCRC staff contacted the property owner and informed them of the discrepancy and discussed possible resolutions. Discussions were prolonged due to the limited time spent by the owner locally as he is a professor out of state and preferred direct discussions. Discussions renewed last week, and an offer of compensation was presented retroactively for the easement and a temporary grading permit. After negotiations, the property owner agreed upon One Thousand (\$1,000.00) Dollars.

PROPOSED MOTION: that upon the recommendation of the Director of Engineering, and concurrence of the Managing Director, the Board hereby approves and authorizes the Chair and Managing Director to accept and sign the counter offer of just compensation necessary to acquire a public sidewalk easement and temporary grading permit, as depicted in Attachment “A”, upon a parcel of property commonly referred to as 905 E. Cross Street, with a corresponding tax parcel number of K-11-03-381-026, being Lot 15 Supervisor’s Plat No. 1, Section 3, Town 3 South, Range 7 East, from the record owners Robert Kevin Reed and Helena Solano-Reed.

6. 2020 Capital Equipment Purchase – Tractor Upfitting

Staff is requesting the Board authorize the purchase of wet kit upfitting for three (3) new model year 2020 International HV613 truck chassis from Truck & Trailer Specialties, Inc. of Howell, Michigan using the City of Rochester Hills MITN Purchasing Cooperative Member Service Agreement in accordance with the attached quotation from Truck & Trailer Specialties dated August 1, 2019, for a total cost of \$60,120.00. This purchase authorization is planned for the FY2020 budget for road equipment capital outlay.

PROPOSED MOTION: that upon the recommendation of the Director of Operations and the concurrence of the Managing Director, the Board hereby approves the purchase from Truck & Trailer Specialties, Inc., 1200 Victory Drive, Howell, Michigan, 48843 through the City of Rochester Hills MITN Purchasing Cooperative Member Service Agreement of wet kit upfitting for three (3) new model year 2020 International HV613 truck chassis for the total cost of \$60,120.00.

7. Payroll & Bills for August 7, 2019

Staff is requesting the Board to approve the payment of payroll and bills for August 7, 2019.

PROPOSED MOTION: the Board hereby approves Voucher 10362 totaling \$342,783.43 for payroll of August 7, 2019, and Voucher 10363 totaling \$2,218,656.14 in payment of bills for August 7, 2019.

B. ACTION ITEMS

1. Hewitt Road Permit Application #14345 – Waiver Request

Midwestern Consulting, on behalf of property owner Rahul Naik, is requesting a sight distance waiver for a residential driveway located at 271 N. Hewitt Road in Ypsilanti Township. The Board denied this waiver on February 19, 2019 (RC19-044). Additionally, a similar waiver request was denied by the WCRC Board on April 22, 2004 (RC04-142). The applicant has since modified their proposal to construct a 'right in / right out' median at their approach. County Highway Engineer Matt MacDonell has rejected this proposal. The applicant desires to seek a new waiver request from the Board. Revised documents received from the applicant are included in the Board packet for your review and consideration.

PROPOSED MOTION: that upon the recommendation of the County Highway Engineer and the concurrence of the Managing Director, the Board hereby denies a sight distance waiver, as requested by Midwestern Consulting on behalf of the property owner Rahul Naik, for a residential driveway located at 271 N. Hewitt Road in Ypsilanti Township.

COMMISSIONERS
DOUGLAS E. FULLER
CHAIR

BARBARA RYAN FULLER
VICE-CHAIR

RODRICK K. GREEN
MEMBER

WASHTENAW COUNTY
BOARD OF COUNTY ROAD COMMISSIONERS

555 NORTH ZEEB ROAD
ANN ARBOR, MICHIGAN 48103
WWW.WCROADS.ORG
TELEPHONE (734) 761-1500
FAX (734) 761-3737

MANAGING DIRECTOR

MATTHEW F. MacDONELL, P.E.
DIRECTOR OF ENGINEERING
COUNTY HIGHWAY ENGINEER

JAMES D. HARMON, P.E.
DIRECTOR OF OPERATIONS

DANIEL D. ACKERMAN
DIRECTOR OF FINANCE & IT

August 12, 2019

TO: Robert Reed & Helena Solano-Reed
905 E. Cross Street
Ypsilanti, MI 48197

RE: Good Faith Offer to Purchase a Public Sidewalk Easement & Grading Permit
2018 Cross Street Preventative Maintenance

Dear Mr. & Mrs. Reed:

The Board of County Road Commissioners of the County of Washtenaw, a public body corporate (hereinafter "WCRC") hereby submits to you a single unified good faith offer to purchase a public sidewalk easement and a grading permit upon the property commonly referred to as 905 E. Cross Street, Ypsilanti, Michigan 48197. This good faith offer to purchase is being submitted to you in accordance with the provisions of the Uniform Condemnation Procedures Act (UCPA), being 1980 PA 87, as amended. Therefore, to the extent necessary to respond to any additional claims of damages or as may be necessary to revise or refine this good faith offer to purchase, the same is subject to the provisions of Section 5(2) of the UCPA being MCL 213.55(2). This acquisition is in connection with the 2017 Cross Street Preventative Maintenance project, located in the Township of Ypsilanti, Washtenaw County, Michigan.

For a period of fourteen (14) days from and after today's date, you have the opportunity to indicate your acceptance and agreement to the good faith offer being made for a public sidewalk easement and a grading permits upon this property. The property in question is referenced as tax parcel identification number K-11-03-381-026. The parcel contains 0.146 net acres or approximately 6,360 square feet of land area. The easement area is 0.0001 acres or 53 square feet (see Attachment "A") and the permit area is 0.0057 acres or 250 square feet of land area (see Attachment "B"). The site is zoned R5-Single Family. The recorded titleholder is Robert Kevin Reed & Helena Solano-Reed, husband & wife.

The WCRC utilized assessment records to establish the initial good faith offer and determine the compensation for the respective compensable items and is prepared to submit to you the below described good faith offer, based upon this information. Copies of the compensation estimate is submitted herewith for your review.

The WCRC is prepared to offer an estimated total just compensation of ~~Two Hundred Fifteen & NO/100 (\$215.00) Dollars~~. **TOTAL COMPENSATION OF \$1,000.00** The total compensation consists of One Hundred Twenty Five & NO/100 (\$125.00) Dollars to acquire a public sidewalk easement & Ninety & NO/100 (\$90.00) Dollars for a grading permit on the property commonly referred to as 905 E. Cross Street, Ypsilanti Township, Washtenaw County, Michigan. Again, this property corresponds to tax identification number K-11-03-381-026.

In making this good faith offer to purchase this easement and temporary permit from you, the WCRC reserves the right to bring a federal or a state cost recovery action, arising out of the release of hazardous substances at or on this property. The WCRC's determination of just compensation for the acquisition of a public sidewalk easement and a grading permit acknowledges and recognizes the reservation of rights to bring either a federal or a state cost recovery action.

If you believe that the good faith written offer to purchase submitted herewith, does not include, nor fully include, one or more items of compensable property or damage, for which you intend to claim a right to just compensation, you must, for each item, file a written claim with the WCRC. The written claim must provide sufficient information and detail to enable the WCRC to evaluate the validity of the claim and to determine its value. All claims must be filed within ninety (90) days after the date that the good faith offer to purchase is submitted. After receiving a written claim, the WCRC can provide written notice that it contests the compensability of the claim, establish an amount that it believes to be just compensation for the item of

Good Faith Offer to Purchase Public Sidewalk Easement & Grading Permit.

property or damage, or the claim can be rejected. The sum of the good faith written offer to purchase for all such items of property or damage, plus the original good faith written offer constitutes the good faith offer required by the UCPA.

If you fail to file a timely written claim, then any claim will be barred. Moreover, if a claim is filed that is deemed to be frivolous, or in bad faith, the WCRC is entitled to recover its actual and reasonable expenses incurred in evaluating the validity, and determining the value of the claim submitted.

If you are in agreement with this good faith written offer to purchase being submitted to you, for the acquisition of a public sidewalk easement and a grading permit, please so signify by signing a copy of this good faith offer within fourteen (14) days from the date of transmittal, and returning it to the undersigned, as Project Manager – Right of Way for the Washtenaw County Road Commission.

The undersigned will make all arrangements necessary for the transmittal through the Washtenaw County Road Commission to you the sum of money set forth in this good faith offer to purchase, payable to all parties of interest, upon receipt from you of the necessary documents of conveyance for a public road easement and temporary permits including a release of all claims.

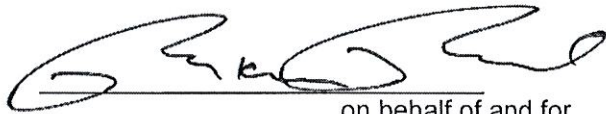
Respectfully,



Curtis M. Brochue, SR/WA
Project Manager – Right of Way

I hereby agree to accept the terms and conditions set forth in the good faith offer to purchase. I understand that subject to my ability to being able to prove and satisfy that I/we can convey a public sidewalk easement to the Board of County Road Commissioners of the County of Washtenaw, a public body corporate, the offer to purchase this property on the basis of an appraisal determination of value is hereby accepted.

Dated: 12 Aug, 2019



, on behalf of and for
Robert Kevin Reed & Helena Solano-Reed

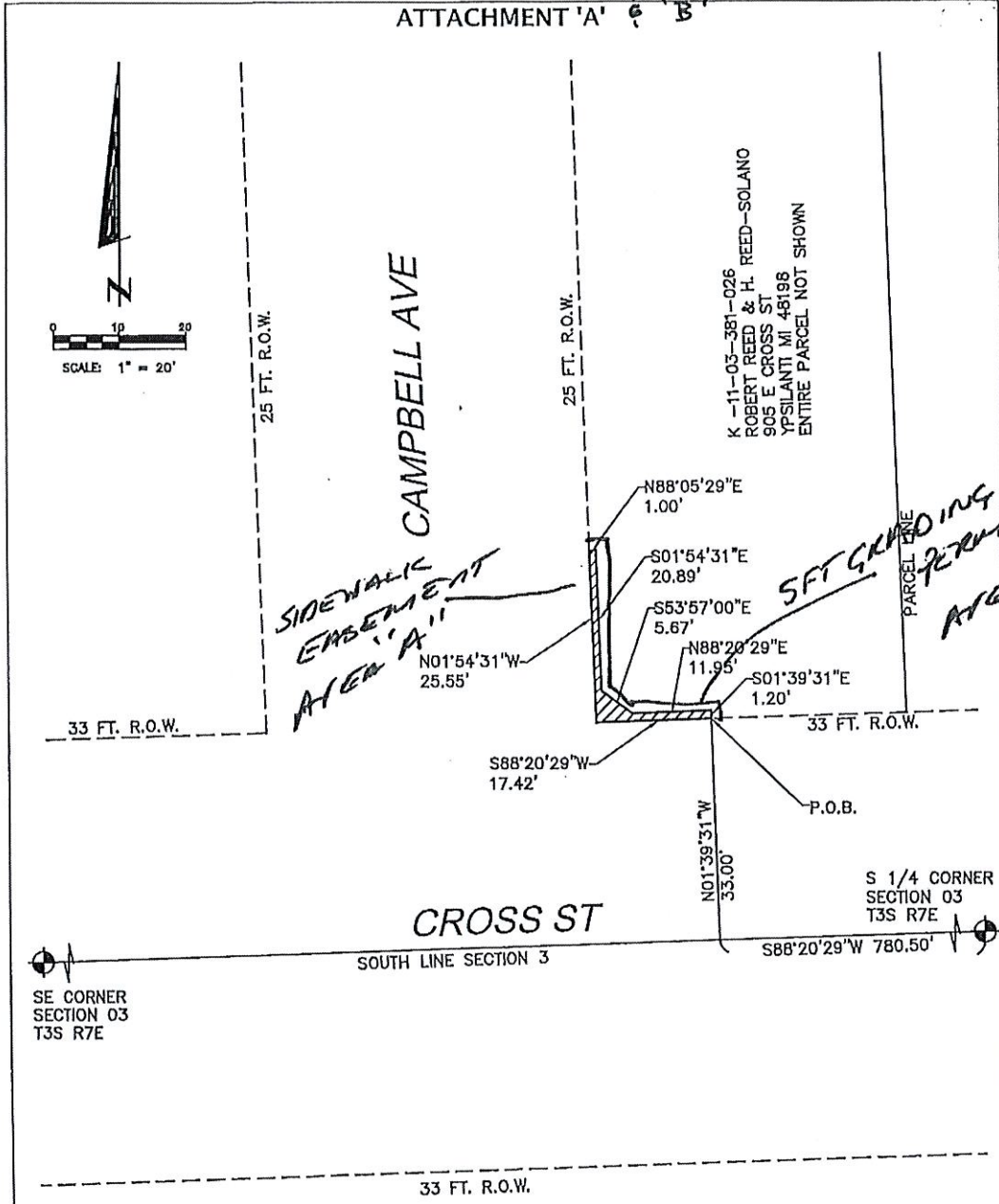
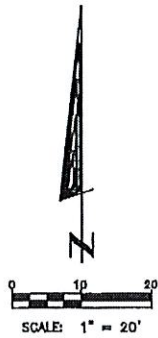
I hereby agree to accept the terms and conditions set forth in the good faith offer to purchase. The Board of County Road Commissioners of the County of Washtenaw, a public body corporate, the good faith offer to purchase a public road easement and temporary permits permit on a portion this property is hereby accepted.

Douglas E. Fuller, Chair

Sheryl Soderholm Siddal, Managing Director

Dated: _____, 2019

ATTACHMENT 'A' & 'B'



LEGEND

PUBLIC LAND SURVEY SYSTEM CORNER

AREA

PROPOSED SIDEWALK EASEMENT
AREA: 0.001 AC (53 SF)

BASIS OF BEARINGS:
WCRC FIELD SURVEY 2017

THIS DOCUMENT IS NOT A
P.A. 132 SURVEY.
DIMENSIONS AND AREAS BASED ON TAX
PARCEL DESCRIPTIONS. NOT BASED ON
ACTUAL FIELD SURVEY.



| | |
|------------|---------------------------|
| DATE: | 06/26/2018 |
| DRAWN: | J.A.M. |
| CHECKED: | C.M.B. |
| FILE: | ENG/2017/PM/CROSS/SURVEY/ |
| PROJ. NO.: | |
| REVISED: | |

PROPOSED SIDEWALK EASEMENT
CROSS ST

SOUTHWEST QUARTER
SECTION 3, T.3S., R.7E.
WASHTENAW COUNTY
MICHIGAN

LEGAL DESCRIPTION - PARENT PARCEL K -11-03-381-026

LOT 15 SUPERVISOR'S PLAT NO. 1, SECTION 3 T3S, R7E.

BASIS OF BEARINGS:

WASHTENAW COUNTY G.I.S. PARCEL REPORT GENERATED ON 06/26/2018

LEGAL DESCRIPTION - SIDEWALK EASEMENT

A SIDEWALK EASEMENT LOCATED IN THE SOUTHWEST QUARTER OF SECTION 3, TOWN 3 SOUTH, RANGE 7 EAST, YPSILANTI TOWNSHIP, WASHTENAW COUNTY, MICHIGAN, MORE PARTICULARLY DESCRIBED AS:

COMMENCING AT THE SOUTH 1/4 CORNER OF SECTION 3, THENCE ALONG THE SOUTH LINE OF SAID SECTION AND CENTERLINE OF CROSS STREET, S88°20'29"W 780.50'; THENCE N01°39'31"W 33.00 FEET TO A POINT ON THE EXISTING NORTHERLY RIGHT OF WAY LINE OF CROSS STREET, SAID POINT ALSO BEING THE POINT OF BEGINNING; THENCE ALONG THE EXISTING NORTHERLY RIGHT OF WAY LINE OF CROSS STREET, S88°20'29"W 17.42 FEET TO THE EXISTING EASTERLY RIGHT OF WAY LINE OF CAMPBELL AVENUE; THENCE ALONG THE EXISTING EASTERLY RIGHT OF WAY LINE OF CAMPBELL AVENUE, N01°54'31"W 25.55 FEET; THENCE N88°05'29"E 1.00 FOOT; THENCE S01°54'31"E 20.89 FEET; THENCE S53°57'00"E 5.67 FEET; THENCE N88°20'29"E 11.95 FEET; THENCE S01°39'31"E 1.20 FEET TO THE POINT OF BEGINNING.. SAID EASEMENT CONTAINING 53 SQUARE FEET (0.001 ACRES) OF LAND, MORE OR LESS. ALSO BEING SUBJECT TO EASEMENTS AND RESTRICTIONS OF RECORD, IF ANY.

BASIS OF BEARINGS:

WCRC FIELD SURVEY 2017

THIS DOCUMENT IS NOT A
P.A. 132 SURVEY.

DIMENSIONS AND AREAS BASED ON TAX
PARCEL DESCRIPTIONS. NOT BASED ON
ACTUAL FIELD SURVEY.



DATE: 06/26/2018

DRAWN: J.A.M.

**PROPOSED SIDEWALK EASEMENT
CROSS ST**

38

TRUCK & TRAILER *Specialties, Inc.*

900 Grand Oaks Drive | Howell, MI 48843 | www.ttspec.com | ph: (517) 552-3855 | fx: (517) 552-3666

August 1, 2019

Washtenaw County Road Commission
555 North Zeeb Road, Ann Arbor, MI 48103
Attn: Mike Livsey, Equipment Maintenance Supervisor

Equipment Quotation

The following pricing is based on City of Rochester Hills RFP-RH-13-030 Awarded November 2013

Install Tractor Wet Kit including the following:

489 PTO Chelsea to fit manual transmission with approx. 125% PTO

Parker 3.94 CID gear pump directly coupled to the PTO

Rexroth 3m4-12 control valve including the following:

Unloader section for gear pump main relief at 2500 psi

DA Hoist air section 2000 psi pressure limit for hoist up and 500 for hoist down with dump valve

SA EPC 15 gallon for dust control with pressure limit 2000 psi

SA EPC for Lowboy 2500 psi

16" SS valve enclosure

Control console in cab includes a VM-8 detented controller for hoist

Slimline back of cab hydraulic tank with return filter, 50 gallons

Ball valve shut-off on tanks

AW32 hydraulic oil

9' jumper hoses at the rear include a 1" pressure line for dump, 3/4" return line and 3/4" pressure line for the Lowboy/dust control trailer operation

County to supply hydraulic couplers

Spring-mount back of cab to hold hoses

Install Dickey-john Control Point, wiring harness, liquid driver & needed cables for boom valve & flowmeter

Install Customer Lighting & Electrical including the following:

Chassis switches for: PTO, strobes, air tailgate & pin-lock

Two (2) ECCO (mo. ED3706AG) LED green/amber split flashers mounted in grille (separate switch)

One (1) Whelen (mo. MC-16PA) Century 12VDC mini lightbar with amber dome & amber LED's mounted on truck cab with aluminum riser and weather pack

Two (2) 4" ECCO (mo. E92006) LED spreader work lights rear-facing mounted on cab

OEM STT/BU lights at rear

Timed Flaming River battery disconnect

7-pin trailer plug flush-mounted at leftside rear, centerpin used for trailer ABS

7-pin trailer plug flush-mounted at rear to operate strobes, valves & tailgate locks

Install Minimizer Spray Control Fenders for tandem chassis including the following:

Minimizer (mo. Min900B) tandem fender kit - Black

Plastic fender (mo. B4578BTPA) mounting kit

All necessary supports and brackets

Install Frame Reinforcement at rear of Chassis behind the 5th wheel including the following:

Box rear of frame with 3/4" plate

Paint as necessary

Install serrated bar grating frame cover from the back of hydraulic tank to front of 5th wheel plate, paint Black

Install Buyers 24x28x18" Aluminum step box on street side

TRUCK & TRAILER *Specialties, Inc.*

900 Grand Oaks Drive | Howell, MI 48843 | www.ttspec.com | ph: (517) 552-3855 | fx: (517) 552-3666

Above installed pricing: **\$20,040.00 ea.**

Chassis requirements to be confirmed at time of order:

Exhaust under curbside door
PTO enabled transmission
6 chassis auxiliary switches

Payment Terms: Net 30 days. Pricing effective for 45 days.

Pricing does not include any of the Rochester Hills RFQ discounts that may be applicable.
2% discount off total taken at invoice if payment received within 30 days.

FOB: Washtenaw County Road Commission

Delivery: 60-90 days after receiving chassis

Thank you for the opportunity to quote.

Respectfully submitted by,
Jon Luea/Brian Bouwman

VOUCHER #

10362

WASHTENAW COUNTY
BOARD OF ROAD COMMISSIONERS
ANN ARBOR, MICHIGAN

DATE August 6, 2019
WARRANT # _____
AMOUNT \$ 342,783.43
ACCT. CODE 20

TO: WASHTENAW COUNTY ROAD COMMISSION

| ITEMS | DISCOUNT | CLASSIFICATION | GROSS AMT. |
|--------------------------------------|----------|----------------|---------------|
| 20104600.800000 | | | |
| PAYROLL FOR August 7, 2019 | | | \$ 342,783.43 |
| GROSS PAYROLL \$ 347,304.57 | | | |
| <u>A.C.H.</u> | | | |
| Payroll Direct Deposit \$ 225,398.77 | | | |
| Deferred Comp \$ 10,794.00 | | | |

It is hereby certified that the above account is true and correct and that no part of it has been paid.

To the County Clerk:
The within account has been carefully checked and audited. You are hereby directed to draw your warrant upon the County Treasurer for the above amount payable from the County Road Fund.

CONTROLLER

The above account approved by:

CHAIRMAN

MEMBER

MANAGING - DIRECTOR & DEPUTY CLERK OF THE BOARD

BOARD OF COUNTY ROAD COMMISSIONERS

VOUCHER # 10363

WASHTENAW COUNTY
BOARD OF ROAD COMMISSIONERS

ANN ARBOR, MICHIGAN

DATE August 5, 2019

WARRANT # _____

TO: WASHTENAW COUNTY ROAD COMMISSION

AMOUNT \$2,218,656.14

ACCT. CODE 20

| ITEMS | DISCOUNT | CLASSIFICATION | GROSS AMT. |
|-------------------------------------|----------|----------------|-----------------|
| 20104600.800000 | | | \$ 2,106,924.62 |
| ACH Vendor Payments | | | \$ 85,992.26 |
| FICA/MEDICARE | | | \$ 25,739.26 |
| ACCOUNTS PAYABLE FOR August 7, 2019 | | | |

It is hereby certified that the above account is true and correct and that no part of it has been paid.

To the County Clerk:
The within account has been carefully checked and audited. You are hereby directed to draw your warrant upon the County Treasurer for the above amount payable from the County Road Fund.

CONTROLLER

The above account approved by:

CHAIRMAN

MEMBER

MANAGING - DIRECTOR & DEPUTY CLERK OF BOARD

BOARD OF COUNTY ROAD COMMISSIONERS

Date 08/05/2019
Time 13:00:36

Washtenaw County Road Commission
AP - Check Register

Page 1 of 3
balkwellt

| ----- Check ----- | | ----- Vendor ----- | | Check |
|-------------------|------------|--------------------|--------------------------------|------------|
| Number | Date | Number | Name | Amount |
| 80254 | 08/07/2019 | AAAWIR | AAA WIRE ROPE & SPLICING | 159.73 |
| 80255 | 08/07/2019 | ABSTIT | ABSOLUTE TITLE | 800.00 |
| 80256 | 08/07/2019 | ADVAUT | ADVANCE AUTO PARTS | 22.98 |
| 80257 | 08/07/2019 | ONYX00 | ADVANCED DISPOSAL SERVICES | 2,458.74 |
| 80258 | 08/07/2019 | AFLACO | AFLAC | 27.78 |
| 80259 | 08/07/2019 | AGGIND | AGGREGATE INDUSTRIES, MGMT INC | 83,444.42 |
| 80260 | 08/07/2019 | AISCON | AIS CONSTRUCTION EQUIPMENT | 944.18 |
| 80261 | 08/07/2019 | ALRSTE | ALRO STEEL CORP | 263.77 |
| 80262 | 08/07/2019 | AMDHYD | AM-DYN-IC FLUID POWER INC | 713.03 |
| 80263 | 08/07/2019 | ANNBAN | ANN ARBOR STATE BANK | 14,951.83 |
| 80264 | 08/07/2019 | AAWELD | ANN ARBOR WELDING SUPPLY | 66.19 |
| 80265 | 08/07/2019 | BWDIST | B & W DISTRIBUTING | 125.00 |
| 80266 | 08/07/2019 | BERINT | BERNTSEN INTERNATIONAL INC | 1,199.62 |
| 80267 | 08/07/2019 | BLUECR | BLUE CROSS BLUE SHIELD OF MI | 282,047.00 |
| 80268 | 08/07/2019 | BOBJAK | BOB JAKOVLJESKI | 285.00 |
| 80269 | 08/07/2019 | BREINC | BREWERS INC | 1,109.50 |
| 80270 | 08/07/2019 | CADASP | CADILLAC ASPHALT LLC | 3,288.15 |
| 80271 | 08/07/2019 | CDWG00 | CDW-G | 543.43 |
| 80272 | 08/07/2019 | CHARTE | CHARTER COMMUNICATIONS | 204.98 |
| 80273 | 08/07/2019 | CHELUM | CHELSEA LUMBER COMPANY | 54.92 |
| 80274 | 08/07/2019 | CHESTA | CHELSEA STATE BANK | 73,222.58 |
| 80275 | 08/07/2019 | CHOSOL | CHLORIDE SOLUTIONS, LLC | Void |
| 80276 | 08/07/2019 | CHOSOL | CHLORIDE SOLUTIONS, LLC | 54,926.74 |
| 80277 | 08/07/2019 | COMCAS | COMCAST | 1,164.38 |
| 80278 | 08/07/2019 | CONENG | CONSUMERS ENERGY | 671.08 |
| 80279 | 08/07/2019 | CONREN | CONTRACTORS RENTAL | 34,869.42 |
| 80280 | 08/07/2019 | CRUISI | CRUISERS, INC | 898.00 |
| 80281 | 08/07/2019 | CUMMIC | CUMMINS BRIDGEWAY LLC | 73.54 |
| 80282 | 08/07/2019 | DKTRUC | D & K TRUCK COMPANY | 223,797.21 |
| 80283 | 08/07/2019 | DANEXC | DAN'S EXCAVATING INC | 390,111.26 |
| 80284 | 08/07/2019 | DOMSYS | DOMINANT SYSTEMS | 1,317.60 |
| 80285 | 08/07/2019 | DTEENE | DTE ENERGY | 1,647.21 |
| 80286 | 08/07/2019 | DTENER | DTE ENERGY | 11,854.06 |
| 80287 | 08/07/2019 | EASJOR | EJ USA, INC | 3,096.33 |
| 80288 | 08/07/2019 | ELETER | ELECTRICAL TERMINAL SERVICE | 61.68 |
| 80289 | 08/07/2019 | EMEHEA | EMERGENT HEALTH PARTNERS | 1,155.00 |
| 80290 | 08/07/2019 | FARUND | FARMER & UNDERWOOD TRUCKING | 13,322.28 |
| 80291 | 08/07/2019 | FIRNAT | FIRST NATIONAL BANK OMAHA | 1,788.87 |
| 80292 | 08/07/2019 | FLEPRI | FLEET PRIDE | 787.00 |
| 80293 | 08/07/2019 | FOUBUI | FOUNDATION BUILDING MATERIALS | 14.72 |
| 80294 | 08/07/2019 | FREGRA | FREIGHTLINER OF GRAND RAPIDS | 154.00 |
| 80295 | 08/07/2019 | GALLOU | GALLOUP | 74.79 |
| 80296 | 08/07/2019 | GRAING | GRAINGER INC | 1,037.98 |
| 80297 | 08/07/2019 | GREACE | GREAT LAKES ACE HARDWARE | 35.74 |
| 80298 | 08/07/2019 | GLGROE | GREAT LAKES GROENEVELD, LLC | 167.23 |
| 80299 | 08/07/2019 | GROUP0 | GROUP 31 SUPPLY | 818.86 |
| 80300 | 08/07/2019 | HALMEC | HALEY MECHANICAL | 438.48 |
| 80301 | 08/07/2019 | HARIND | HARRINGTON INDUSTRIAL | 86.75 |
| 80302 | 08/07/2019 | HEAEQU | HEALTH EQUITY | 3,113.53 |

Date 08/05/2019
Time 13:00:36

Washtenaw County Road Commission
AP - Check Register

Page 2 of 3
balkwellt

| ----- Check ----- | | ----- Vendor ----- | | Check |
|-------------------|------------|--------------------|--------------------------------|------------|
| Number | Date | Number | Name | Amount |
| 80303 | 08/07/2019 | INTBLU | INTEGRAL BLUE | 3,319.94 |
| 80304 | 08/07/2019 | JACTRU | JACKSON TRUCK SERVICE INC | 332.24 |
| 80305 | 08/07/2019 | KBKLAN | KBK LANDSCAPING | 138,359.04 |
| 80306 | 08/07/2019 | LAWPRO | LAWSON PRODUCTS INC | 1,243.11 |
| 80307 | 08/07/2019 | LEIGEO | LEICA GEOSYSTEMS, INC. | 1,088.00 |
| 80308 | 08/07/2019 | LESBRO | LESTER BROTHERS EXCAVATING INC | 107.00 |
| 80309 | 08/07/2019 | LIGCAR | LIGHTHOUSE CAR WASH | 120.00 |
| 80310 | 08/07/2019 | LOWES0 | LOWES | 219.03 |
| 80311 | 08/07/2019 | MADELE | MADISON ELECTRIC CO | 16.56 |
| 80312 | 08/07/2019 | DRMAKS | MAK KRZECZKOWSKI | 7,475.00 |
| 80313 | 08/07/2019 | KLETRU | MANCHESTER TRUE VALUE | 90.69 |
| 80314 | 08/07/2019 | MATTES | MATERIALS TESTING | 21,795.25 |
| 80315 | 08/07/2019 | MENINC | MENARD INC | 1,174.44 |
| 80316 | 08/07/2019 | MICCAT | MICHIGAN CAT | 202,840.93 |
| 80317 | 08/07/2019 | MCRCS2 | MICHIGAN COUNTY RD COMMISSION | 114.92 |
| 80318 | 08/07/2019 | MIDMAI | MIDWEST MAINTENANCE SERVICES | 3,057.81 |
| 80319 | 08/07/2019 | MILBRO | MILLER BROS CONSTRUCTION | 58,580.87 |
| 80320 | 08/07/2019 | MLIMED | MLIVE MEDIA GROUP | 38.88 |
| 80321 | 08/07/2019 | MORINC | MORBARK LLC | 297.63 |
| 80322 | 08/07/2019 | MERS00 | MUNICIPAL EMPLOYEES RETIREMENT | 179,274.30 |
| 80323 | 08/07/2019 | NAPAUT | NAPA AUTOPARTS | 857.58 |
| 80324 | 08/07/2019 | NATHIG | NATIONAL HIGHWAY MAINT SYSTEM | 14,300.00 |
| 80325 | 08/07/2019 | NICVAN | NICOLE PETERSON | 100.00 |
| 80326 | 08/07/2019 | OCCHEA | OCCUPATIONAL HEALTH CENTERS OF | 306.00 |
| 80327 | 08/07/2019 | OPIS00 | OPIS | 414.00 |
| 80328 | 08/07/2019 | ORCHIL | ORCHARD HILTZ & MCCLIMENT INC | 24,538.50 |
| 80329 | 08/07/2019 | OSBASS | OSBURN ASSOCIATES INC | 7,824.56 |
| 80330 | 08/07/2019 | OSBIND | OSBURN INDUSTRIES | 18,222.31 |
| 80331 | 08/07/2019 | PARDAD | PART D ADVISORS, INC. | 1,547.57 |
| 80332 | 08/07/2019 | PENTOO | PENNSYLVANIA TOOL | 592.62 |
| 80333 | 08/07/2019 | WCRC-- | PETTY CASH | 262.70 |
| 80334 | 08/07/2019 | PEXTAC | PEXCO LLC - TACOMA | 1,460.00 |
| 80335 | 08/07/2019 | PRECOM | PRECISION COMPUTER SOLUTIONS | 2,675.00 |
| 80336 | 08/07/2019 | QUFIRE | QUALITY FIRE SERVICES | 758.70 |
| 80337 | 08/07/2019 | RECYCL | RECYCLE ANN ARBOR | 423.00 |
| 80338 | 08/07/2019 | OAKCOU | ROAD COMMISSION FOR OAKLAND CO | 120.02 |
| 80339 | 08/07/2019 | RSENGI | RS ENGINEERING, LLC | 5,963.19 |
| 80340 | 08/07/2019 | SAFAUT | SAFELITE AUTO GLASS | 235.00 |
| 80341 | 08/07/2019 | SALTRU | SALENBIEN TRUCKING | 133,554.38 |
| 80342 | 08/07/2019 | SHEWIL | SHERWIN WILLIAMS | 739.49 |
| 80343 | 08/07/2019 | SIGTEC | SIGMA TECHNOLOGIES | 425.00 |
| 80344 | 08/07/2019 | SOEGRO | SOELCH GROUP | 6,718.00 |
| 80345 | 08/07/2019 | SOULYO | SOUTH LYON FENCE & SUPPLY INC | 148.44 |
| 80346 | 08/07/2019 | SOUEQU | SOUTHEASTERN EQUIPMENT COMPANY | 131.72 |
| 80347 | 08/07/2019 | STAHAR | STADIUM HARDWARE | 115.71 |
| 80348 | 08/07/2019 | STAINS | STANDARD INSURANCE COMPANY | 8,744.91 |
| 80349 | 08/07/2019 | HONSER | STANLEY CONVERGENT SECURITY | 252.00 |
| 80350 | 08/07/2019 | STOMIC | STONECO OF MICHIGAN | 3,304.21 |
| 80351 | 08/07/2019 | SUBCHE | SUBURBAN CHEVROLET | Void |

Date 08/05/2019
Time 13:00:36

Washtenaw County Road Commission
AP - Check Register

Page 3 of 3
balkwellt

| ----- Check ----- | | ----- Vendor ----- | | Check |
|-------------------|------------|--------------------|-----------------------------|-----------|
| Number | Date | Number | Name | Amount |
| 80352 | 08/07/2019 | SUBCHE | SUBURBAN CHEVROLET | 1,363.23 |
| 80353 | 08/07/2019 | SUPTUR | SUPERIOR TURBO & INJECTION | 593.46 |
| 80354 | 08/07/2019 | SUNTIM | THE SUN TIMES | 55.00 |
| 80355 | 08/07/2019 | TLSCON | TLS CONSTRUCTION LLC | 5,931.60 |
| 80356 | 08/07/2019 | TRITRU | TRI-COUNTY INTERNATIONAL | 676.27 |
| 80357 | 08/07/2019 | TRUSPE | TRUCK & TRAILER SPECIALTIES | 67.10 |
| 80358 | 08/07/2019 | ARRUNI | UNIFIRST | 455.10 |
| 80359 | 08/07/2019 | UPS000 | UPS | 3.81 |
| 80360 | 08/07/2019 | VARPRO | VARIPRO | 23,196.33 |
| 80361 | 08/07/2019 | VERWIR | VERIZON WIRELESS | 2,432.75 |
| 80362 | 08/07/2019 | VILMAN | VILLAGE OF MANCHESTER | 46.61 |
| 80363 | 08/07/2019 | WADTRI | WADE-TRIM | 2,280.00 |
| 80364 | 08/07/2019 | WASMAN | WASTE MANAGEMENT | 136.30 |
| 80365 | 08/07/2019 | WEINGA | WEINGARTZ | 55.98 |
| 80366 | 08/07/2019 | WELTRU | WELLER TRUCK PARTS LLC | 1,194.96 |
| 80367 | 08/07/2019 | WJONEI | WJ ONEIL COMPANY | 739.30 |

Report Total

2,106,924.62

Date 08/05/2019
Time 13:02:14

Washtenaw County Road Commission
AP - ACH Remittance Register

Page 1 of 1
balkwellt

| ----Remittance ---- | | ----- Vendor ----- | | Remittance |
|---------------------|------------|--------------------|--------------------------------|------------|
| Number | Date | Number | Name | Amount |
| 1 | 08/07/2019 | FISTHO | FISHBECK THOMPSON CARR & HUBER | 51,126.00 |
| 2 | 08/07/2019 | HUBROT | HUBBELL, ROTH & CLARK, INC | 34,866.26 |
| Report Total | | | | 85,992.26 |

COMMISSIONERS
DOUGLAS E. FULLER
CHAIR
BARBARA RYAN FULLER
VICE-CHAIR
RODRICK K. GREEN
MEMBER

WASHTENAW COUNTY
BOARD OF COUNTY ROAD COMMISSIONERS
555 NORTH ZEEB ROAD
ANN ARBOR, MICHIGAN 48103
WWW.WCROADS.ORG
TELEPHONE (734) 761-1500
FAX (734) 761-3737

SHERYL SODERHOLM SIDDALL, P.E.
MANAGING DIRECTOR

MATTHEW F. MACDONELL, P.E.
DIRECTOR OF ENGINEERING
COUNTY HIGHWAY ENGINEER

JAMES D. HARMON, P.E.
DIRECTOR OF OPERATIONS

DANIEL D. ACKERMAN
DIRECTOR OF FINANCE & IT

May 31, 2019

Rahul Naik
3815 Maple Drive
Ypsilanti, MI 48197

Re: Hewitt Road Residential Driveway Variance Request, Permit Application #14345

Dear Mr. Naik,

This letter is in response to your variance request dated May 16, 2019 for the above referenced driveway application. The application for proposed driveway access at 271 N Hewitt Road in Ypsilanti Township, parcel ID #11-07-160-011 was previously denied by the Washtenaw County Board of County Road Commissioners. I have re-reviewed the application in light of your proposal to restrict egress from the proposed driveway to right turns only. I do not believe the proposed restriction can reliably mitigate the sight distance deficiencies at this location. Therefore, your request for a driveway access permit at this location is again denied.

Sincerely,



Matthew F. MacDonell, P.E.
County Highway Engineer & Director of Engineering

Cc: Ted Hirsch, P.E. / Midwestern Consulting
Charlotte M. Wilson, AICP / Ypsilanti Twp Planning and Development Coordinator
Sheryl Soderholm Siddall, P.E. / WCRC Managing Director
Mark McCulloch, P.E. / WCRC Senior Project Manager - Permits
Angie Borrego / WCRC Permits Coordinator
Allen J. Philbrick, Esq. / Conlin, McKenney & Philbrick, P.C.
W. Daniel Troyka, Esq. / Conlin, McKenney & Philbrick, P.C.



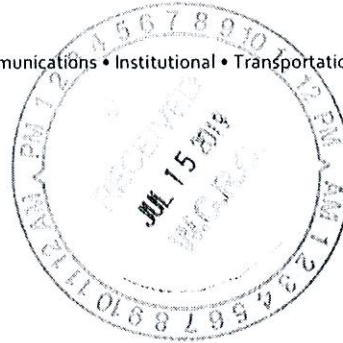
M I D W E S T E R N
C O N S U L T I N G

3815 Plaza Drive
Ann Arbor, Michigan 48108
734.995.0200

Land Development • Land Surveying • Municipal • Wireless Communications • Institutional • Transportation • Landfill Services

July 13, 2019

Washtenaw County Road Commission
555 North Zeeb Road
Ann Arbor, MI 48103
Attn: Matt MacDonell



RE: Driveway Variance Request – 271 N. Hewitt Rd., Ypsilanti Township

Dear Matt,

We are formally applying for an appeal to the denied variance request for the driveway sight distance at 271 North Hewitt Road, Ypsilanti Township. On December 15, 2017 Washtenaw County Road Commission (WCRC) personnel performed a sight distance evaluation and determined that the intersection sight distance to the south is inadequate for a road with a posted speed limit of 45 mph - 265' is achieved while 500' is the design standard.

On January 17, 2019 Midwestern Consulting conducted its own sight distance study to determine the provided intersection sight distances at the neighboring driveways. To provide a baseline for comparison, Midwestern Consulting personnel re-evaluated the intersection sight distance at the proposed driveway location and found that 255' is available to the south. The neighbor at 263 N. Hewitt Rd. has an existing driveway approach located approximately 30' south of the proposed driveway. The neighbor to the north at 279 N. Hewitt Rd. has an existing driveway approach located approximately 100' north of the proposed driveway. Our personnel determined that intersection sight distances at 263 N. Hewitt Rd. & 279 N. Hewitt Rd. are 264' and 274', respectively (see **Fig. 1**).

The practical difficulty is that Hewitt Road has grade rising to the south, creating a situation in which the sight distance is obscured at a closer distance than if Hewitt Road were flat. Furthermore, the relatively small amount of frontage on the subject property does not allow for the proposed driveway to be located further up the hill to the south (which would provide greater sight distance). The WCRC design intersection sight distance is based on AASHTO regulations which indicate for a stopped vehicle turning left onto a two-lane, 45 mph road with no median, 500' of intersection sight distance is to be used as the design standard. It should be noted that the crest vertical curve at N. Hewitt Rd. and Midvale Ave. is also on a horizontal curve. Advisory signs 1.5 blocks north and south of this intersection advise drivers to slow down to 30 mph around the curve (see **Fig. 2**). Although they are not legally enforced, if followed they result in slowing down inbound traffic. Vehicles operating at lower speeds on N. Hewitt Rd. results in less intersection sight distance required.

On January 18, 2019 we applied for a variance at this site. Our variance request was denied in a letter from yourself dated January 31, 2019. The letter stated "...*your request for a variance is denied due to the safety issues created by the lack of adequate sight distance...*" The letter stated that an applicant can submit a request for review of a denial by the Board, but offered no possible solutions. We requested an appeal of the denial in a letter on February 7, 2019, presented our case to the Board of Road Commissioners on February 19th, and were subsequently denied. The

Memorandum

July 13, 2019

Page 2

Board members and other Road Commission representatives/consultants discussed the history of this site, emphasized the lack of sight distance, cited the "significant amount" of crashes near this intersection, and shortly thereafter came to the conclusion that there was no reason to approve a driveway in this location. Again, possible solutions were not offered nor discussed.

In order to address the "significant amount" of crashes near this intersection, we researched the crash reports available on the Michigan Traffic Crash Facts website. We searched for all crashes reported in the past 10 years for the segments of N. Hewitt Rd. between Burns Ave. and Valley Dr. The search returned a total of 35 reported crashes from 2008-2018. However, not all UD-10 crash reports were available for download from the Michigan Traffic Crash Facts website – 29 of the 35 reports were available (these UD-10 reports and the Michigan Traffic Crash Facts search information have been included at the end of this report). Our findings from reviewing these 29 reports are summarized below:

- Nine incidents occurred within 100' of the N. Hewitt Rd. & Midvale Ave. intersection, one occurred 215' south of Midvale, for a total of ten incidents near Midvale Ave.
- All other incidents occurred closer to other intersections, rendering them largely irrelevant to the analysis of a driveway at 271 N. Hewitt Rd.
- Two of the ten Midvale incidents were from vehicles travelling southbound, rendering them irrelevant to the analysis pertaining to lack of intersection sight distance to the south at 271 N. Hewitt Rd.
- Of the eight Midvale incidents involving northbound vehicles:
 - Three were due to a vehicle turning onto/at Midvale (irrelevant to 271 N. Hewitt Rd.)
 - Two were due to a vehicle crossing the centerline and striking a southbound vehicle (irrelevant to normal operation of N. Hewitt Rd.)
 - One was due to vehicles colliding as they travelled northbound & eastbound along N. Hewitt Rd. & Midvale Ave., respectively (irrelevant to 271 N. Hewitt Rd.)
 - Two were due to northbound vehicles rear-ending other northbound vehicles just north of the Midvale intersection. However, these occurred in 2014 & 2015 when N. Hewitt Rd. consisted of two northbound lanes and two southbound lanes – this road now includes a center left turn lane that helps to prevent this scenario from happening.

Because there are existing driveways with similar intersection sight distance deficiencies as 271 N. Hewitt Rd., we can more accurately analyze the level of risk inherent with providing access in this location. Based on these existing driveways and the findings stated above, it can be deduced that the achieved intersection sight distance at these locations (although less than the design standard) has historically presented very little risk in causing any accidents.

Memorandum

July 13, 2019

Page 3

In trying to determine a solution for a driveway location, we considered the feasibility of a shared driveway utilizing an existing driveway approach at either 263 or 279 N. Hewitt Rd. However, this would not materially increase safety as it would only offer a maximum additional 19' of intersection sight distance and would still not be meeting the design standard of 500'. We believe a better solution is to utilize a directional driveway approach – one that would only allow right-hand turns out (see attached **Fig. 3** for a **concept**). This concept includes a raised median in the approach which would discourage vehicles from making left-hand turns. Furthermore, signage could be utilized to improve safety for vehicles using N. Hewitt Rd. As shown in **Fig. 3**, a “hidden driveway ahead” sign could be placed south of the intersection at Midvale, beyond the hill crest. This would benefit not only the potential users of 271 N. Hewitt Rd., but the existing neighbors to the north and south as well. Private signage and pavement markings could also be utilized (as shown in **Fig. 3**) to help enforce the regulated turning movements. This method of access restriction is often used on higher volume roads to prevent left-hand turns out of the site. If vehicles are only turning right out of the site, the lack of sight distance for a vehicle turning left is no longer an issue. Based on the WCRC's original sight distance study performed on December 15, 2017, there is adequate intersection sight distance to the north. In fact, the WCRC study found the length of intersection sight distance to the north to be 600'. The design standard for intersection sight distance for a right turn from stop on a 60 mph road is 575' – comparing this to the 600' achieved indicates that a right turn from this particular site would present minimal risk even if vehicles travelling north on N. Hewitt Rd. were travelling at 60 mph. We believe this solution significantly reduces the level of risk created by the hill to the south and should be approved as an acceptable means of providing access to the site. However, the owner would be willing to consider an option in which left-hand turns into the site are prohibited as well. This would require a slight modification to the geometry of the raised median shown in **Fig. 3**.

To summarize, we believe a variance from the design intersection sight distance standard is a justified request in the following ways:

- The only practical means of access to the subject property is from N. Hewitt Rd. This is a legally split parcel that has a right to be provided access.
- The owner is proposing that the Road Commission consider the option of providing a directional driveway. If only right turns are made from the site (a turning movement for which there is sufficient intersection sight distance), the lack of intersection sight distance to the south is not a factor.
- A review of historical crash reports reveals that the lack of intersection sight distance to the south at the existing driveways near 271 N. Hewitt Rd. has not been a major source of crashes.
- The neighboring properties at 263 & 279 N. Hewitt Rd. currently have driveway approaches providing 264' & 274' of sight distance, respectively. These provided sight distances are also less than the standard of 500', and are not significantly more than what would be provided at the proposed driveway.
- Existing nearby advisory signs advise drivers to slow down to 30 mph around the curve at N. Hewitt Rd. and Midvale Ave. Although this does not technically change the design intersection sight distance requirement, it should be noted that vehicles operating at lower speeds on N. Hewitt Rd. results in less intersection sight distance required.
- The low frequency of trips generated from a single family residence results in a low probability of conflicts between the users of N. Hewitt Rd. and the subject property.
- The theoretical option of utilizing a shared driveway does not significantly improve the sight distance, and is still short of the standard of 500'.

Memorandum

July 13, 2019

Page 4

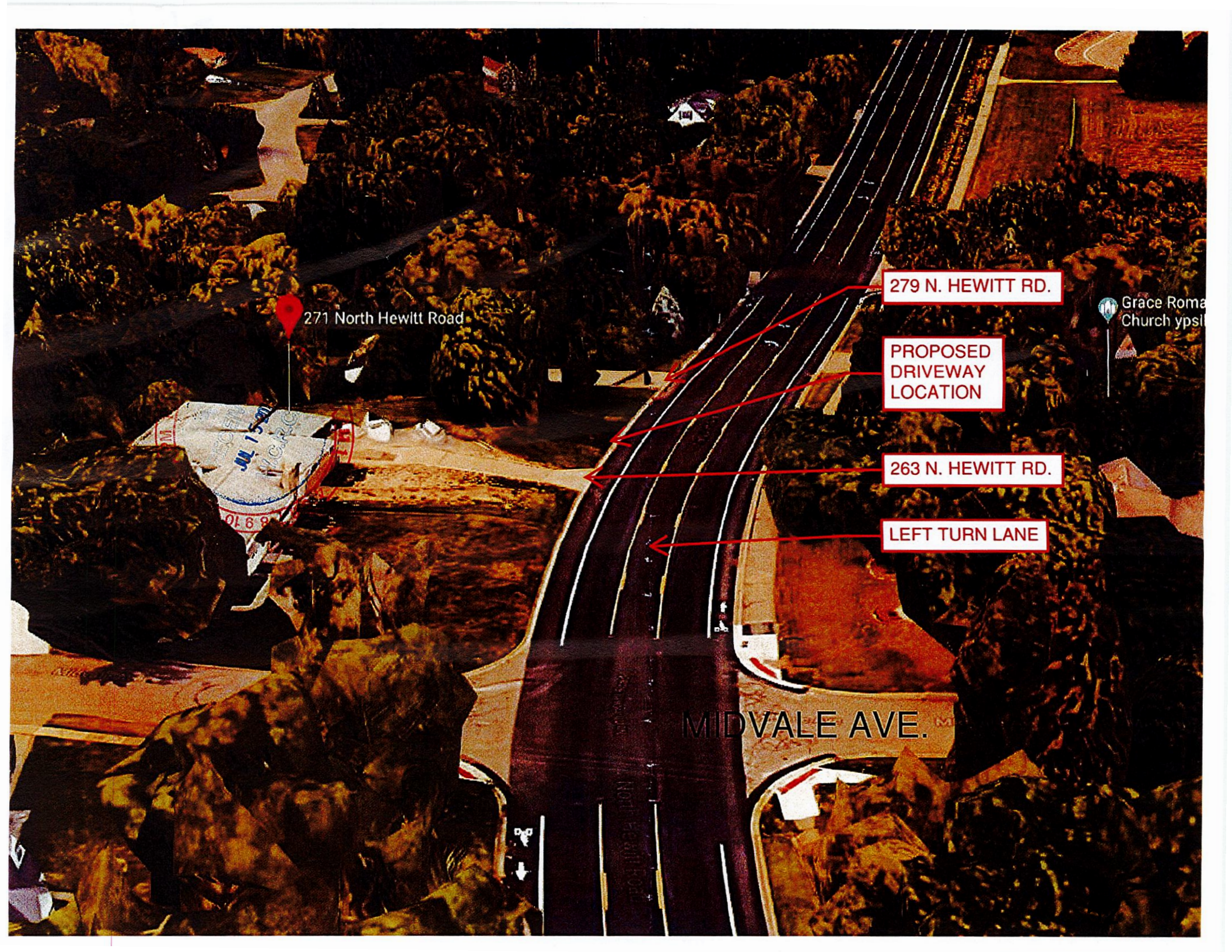
Our second variance request (submitted on May 20, 2019) was denied in a letter from yourself dated May 31, 2019. The letter stated "... *I do not believe the proposed restriction can reliably mitigate the sight distance deficiencies at this location.*" We respectfully disagree with this assessment and would like a chance to present our position to the Board of Commissioners. We feel, for the reasons stated above, it is reasonable to request this variance as the hardship is not of the homeowner's creation and the proposed directional driveway would present a very low risk to the safety of the homeowner and the users of N. Hewitt Rd. Please consider this request at your earliest convenience and do not hesitate to call if you have any questions. Please note, we would prefer this item to be placed on the agenda for the August 20th, 2019 Board meeting.

Thank you for your consideration in this matter.

Sincerely,

A handwritten signature in black ink that reads "Ted Hirsch". The signature is written in a cursive style with a large, sweeping initial "T".

Ted Hirsch, P.E.
MIDWESTERN CONSULTING



271 North Hewitt Road

279 N. HEWITT RD.

PROPOSED
DRIVEWAY
LOCATION

263 N. HEWITT RD.

LEFT TURN LANE

MIDVALE AVE.

Grace Roman
Church ypsil

Run a Report



30
MPH

30
MPH

Elmhurst St

Valley Dr

Midvale St

Midvale St

Burns St

Burns St

Burns St

Harding Ave

Harding Ave

K-7-NE

Burns Park

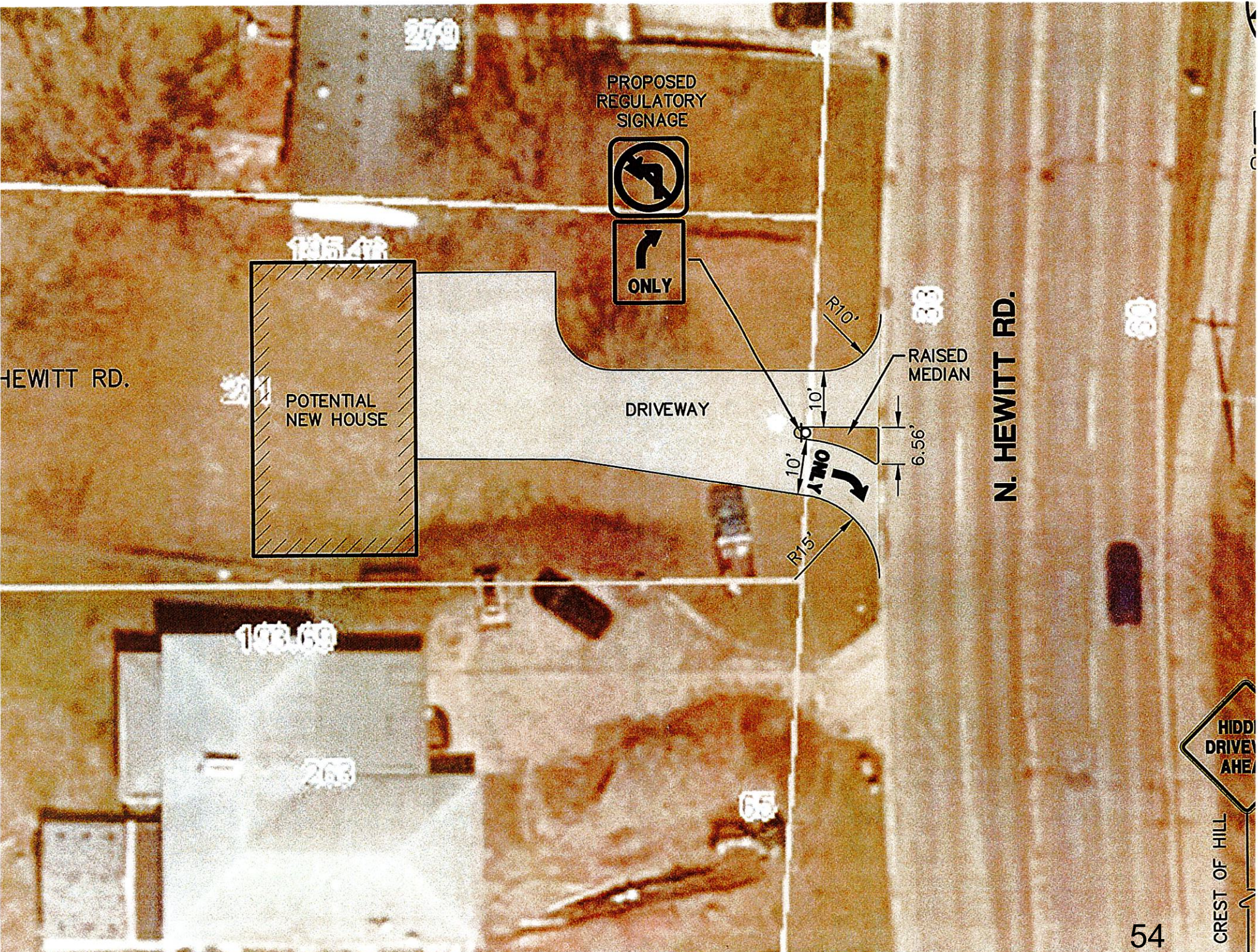
271

2412 2410 2414 2412 2416 2418 2404 2425 2413 239 231 2402 2426 2418 2404 2421 2417 2411 2403 2341 2329 2316 2255 198 2423 2410 2400 2338 2333 2324 2312 2300 2286 2264 2280 2242 2337 2328 2253 2248 2241

277 276 272 266 260 250 2300 277 276 272 266 260 250 2300 2177 2165 2153 2125 224 214 204 2150 2120 2000 1980 1960 1948 1936 1924 2000 1992 1963 1952 1835 2120 2119 2123 182 180 155 2105 2126 1933 1927 1951 1913 1927 2000 2016 1992 1976 1960

2270 305 303 301 2250 2240 2230 2215 2775 2215 276 272 266 260 250 2300 277 276 272 266 260 250 2300 2412 2410 2414 2412 2416 2418 2404 2425 2413 239 231 2402 2426 2418 2404 2421 2417 2411 2403 2341 2329 2316 2255 198 2423 2410 2400 2338 2333 2324 2312 2300 2286 2264 2280 2242 2337 2328 2253 2248 2241

1920 1926 1932 1942 1960 1966 1991 1979 1937 1955 1945 1917 233 276 263 231 2021 2011 1991 1979 1937 1955 1945 1917 233 276 263 231 2000 1980 1960 1948 1936 1924 2000 1992 1963 1952 1835 2120 2119 2123 182 180 155 2105 2126 1933 1927 1951 1913 1927



PROPOSED REGULATORY SIGNAGE



DRIVEWAY

N. HEWITT RD.

R10'

RAISED MEDIAN

10'

10'

R15'



6.56'

HEWITT RD.

HIDDEN DRIVEWAY AHEAD

CREST OF HILL



WASHTENAW COUNTY ROAD COMMISSION

TOWNSHIP/STAFF REPORT – August 20, 2019

For the period of July 29 thru August 11, 2019

TOWNSHIP REPORT

OPERATIONS REPORT

MAINTENANCE

Scraping of gravel roads and patching of paved roads were performed throughout the county. In addition, the following maintenance activities were performed in individual townships:

ANN ARBOR TOWNSHIP

- Drainage and Backslopes – Danbury Lane, Englave Drive
- Fallen Trees – Earhart Road
- Placed Shoulders – Hogback Road

AUGUSTA TOWNSHIP

- Chip Sealing – Bunton Road
- Limestone Patch – Wright Road: 24 tons

BRIDGEWATER TOWNSHIP

- Boom Mow – Austin Road, S Parker Road, Pleasant Lake Road, Schneider Road
- Drainage and Backslopes – Allen Road, Bartlett Road, Easudes Road, Wilbur Road
- Local Road Dust Control
- Lowered Culvert – Sheridan Road

DEXTER TOWNSHIP

- Fallen Trees – N Territorial Road, Riker Road, Stinchfield Woods Road, Toma Road, Waterloo Road
- Gravel Patch Shoulders – Dexter-Pinckney Road, McGregor Road, N Territorial Road
- Limestone Patch – Colby Road, Donner Road, Quigley Road, Riker Road: 12 tons
- Gravel Patch Shoulders – Dexter-Pinckney Road, Dexter Townhall Road, McGregor Road: 24 tons
- Local Road Dust Control
- Primary Road Dust Control

FREEDOM TOWNSHIP

- Boom Mow – Pleasant Lake Road, Parker Road
- Limestone patch – Pleasant Lake Road: 2 tons

LIMA TOWNSHIP

- Cut Trees – Old US-12 Road
- Local Road Dust Control
- Primary Road Dust Control
- Shoulder Maintenance – Old US-12 Road
- Lima Center Road Limestone Resurfacing Project – 457 tons

LODI TOWNSHIP

- Cleaned Pipes – Dell Road
- Drainage and Backslopes – Dell Road, Saline Waterworks Road, N Zeeb Road
- Gravel Patch – Bethel Church Road, Ellsworth Road: 14 tons
- Limestone Patch – Ellsworth Road, Waters Road, S Zeeb Road: 60 tons
- Limestone Patch Shoulders – Parker Road, Wagner Road: 5 tons

LYNDON TOWNSHIP

- Boom Mow – Cassidy Road, Guinan Drive
- Cut Trees – Waterloo Road
- Drainage and Backslopes – Guinan Drive
- Fallen Trees – Bush Road
- Gravel Patch – Roe Road: 13 tons
- Gravel Patch Shoulders – Island Lake Road, Stofer Road, Werkner Road: 6 tons
- Shoulder Maintenance – N Territorial Road

MANCHESTER TOWNSHIP

- Culvert Replacement – Kirk Road
- Drainage and Backslopes – Ely Road, Kirk Road, Sharon Hollow Road
- Limestone Patch – Herman Road: 7 tons
- Local Road Dust Control
- Primary Road Dust Control
- Sharon Hollow Road Gravel Resurfacing Project: 3,259 tons

NORTHFIELD TOWNSHIP

- Cut Trees – Walsh Road
- Chip Sealing – N Territorial Road
- Fallen Trees – Kearney Road
- Limestone Patch Shoulders – Pontiac Trail: 20 tons

SALEM TOWNSHIP

- Boom Mow – Curtis Road, Joy Road, Seven Mile Road, Six Mile Road
- Cleaned Pipes – E Joy Road
- Chip Sealing – Chubb Road, Currie Road, Curtis Road
- Fallen Trees – N Dixboro Road, Seven Mile Road
- Limestone Patch – Napier Road: 6 tons
- Local Road Dust Control
- Roadside Debris – Brookville Road, Curtis Road

SALINE TOWNSHIP

- Limestone Patch – Arkona Road, Macon Road: 75 tons
- Primary Road Dust Control
- Willow Road Limestone Resurfacing Project: 4,781 tons

SCIO TOWNSHIP

- Boom Mow – Riverbend Drive
- Drainage and Backslopes – N Zeeb Road
- Gravel Patch – E Delhi Road: 15 tons
- Limestone Patch Shoulders – Wagner Road: 9 tons
- Local Road Dust Control
- Repair Washout – Peters Road, Scio Road, Wagner Road

SHARON TOWNSHIP

- Boom Mow – Bethel Church Road, Grass Lake Road, Pleasant Lake Road, Sharon Hollow Road, Sharon Valley Road, Smythe Road, Sylvan Road
- Drainage and Backslopes – Easudes Road
- Fallen Trees – Trolz Road
- Limestone Patch – Cherry Hill Road, Gotfredson Road: 58 tons
- Local Road Dust Control
- Primary Road Dust Control

SUPERIOR TOWNSHIP

- Boom Mow – Cherry Hill Road, Geddes Road
- Chip Sealing – Curtis Road
- HMA Resurfacing – Rolling Ridge Court
- Limestone Patch – Warren Road: 4 tons
- Limestone Patch Shoulders – Geddes Road: 10 tons
- Local Road Dust Control
- Roadside Debris – Gotfredson Road, N Harris Road, Vreeland Road

SYLVAN TOWNSHIP

- Boom Mow – Cavanaugh Lake Road, Old US-12 Road
- Limestone Patch – McKinley Road: 12 tons
- Local Road Dust Control

WEBSTER TOWNSHIP

- Berming and Ditching – Joy Road
- Boom Mow – S Hamburg Road, Joy Road
- Chip Sealing – N Territorial Road, Mast Road, Strawberry Lake Road
- Cleared Pipes – Joy Road
- Cut Trees – N Territorial Road, Old US-12 Road, Walsh Road
- Gravel Patch – Huron River Drive, Joy Road, Scully Road: 60 tons
- HMA Resurfacing – Joy Road
- Limestone Patch Shoulders: Gregory Road, N Territorial Road: 9 tons
- Local Road Dust Control

YORK TOWNSHIP

- Drainage and Backslopes – Acorn Avenue
- Limestone Patch – Crane Road, Judd Road, Mooreville Road, Wright Road: 65 tons
- Maple Road Limestone Resurfacing Project – 9,523 tons
- Primary Road Dust Control

YPSILANTI TOWNSHIP

- Boom Mow – Bunton Road, Hitchingham Road, Textile Road, Whittaker Road
- Brush Removal – Bridge Road, Bunton Road,
- Chip Sealing – Bunton Road, Tuttle Hill Road
- Concrete Work and ADA Ramp Installation – Ford Boulevard
- Crack Sealing – Allen Avenue, Borgstrom Street, Georgina Drive, Jay Avenue, Jeffery Street, Jerome Avenue, Juneau Road, Lamay Avenue, Molner Court, Rue Deauville Boulevard, Rue Vendome Boulevard, Rue Willette Boulevard
- Fallen Trees – Greenside Street, Textile Road
- Repaired Drain – Hitchingham Road

SHOP REPORT

Shop Repairs

- New Tire Installation – 8 tires
- Tires Repaired – 3 tires
- Vehicles Serviced – 4
- Vehicles Serviced by Suburban Chevrolet – 3
- Work Orders Completed – 58

Equipment Repair

- Truck 248 – Decommissioned
- Truck 379 – Replaced front springs
- Truck 119 – Replaced front pads, rotors and calipers
- Grader 475 – Prepped
- Truck 322 – Installed new floor
- Truck 394 – Installed new rear brake chambers
- Truck 326 – Installed new starter

BUILDING & GROUNDS REPORT

Yard One

- Janitorial
- Lawn Care
- Installed new air ducts in drivers break room
- Monthly checks
- Remodeled Conference Room 200
- Repaired gutter on fuel island

Yard Two

- Fabricated cage for propane storage and saws
- Lawn care
- Installed hose bib under sink
- Cleaned A/C condensers
- Monthly checks
- Installed white board

Yard Three

- Painted bollards
- Lawn care
- Cleaned A/C condensers
- Monthly checks
- Repaired barn roof

Yard Four

- Lawn care
- Cleaned A/C condensers
- Painted bollards
- Monthly checks

Yard Six

- Repaired garage door
- Lawn care
- Monthly checks

Kaiser Brine Well

- Adjusted packings
- Greased well
- Lawn care

MEETINGS ATTENDED

- 7/31/2019 K. Harris attended the Ford Lake Dam Emergency Action Plan Functional Exercise at the offices of Barr Engineering in Ann Arbor, Michigan
- 8/5/2019 The quarterly CRA Southeastern Council meeting was held in the Assembly Room

MICHIGAN TRANSPORTATION FUND RECEIPTS

06-Aug-19

| MONTH | 2018 | | 2019 | | MONTH DIFFERENCE | | YTD DIFFERENCE | | This Year's Projected Total Based on YTD |
|-----------|--------------|---------------|--------------|---------------|------------------|-------|----------------|-------|--|
| | MONTHLY | YTD | MONTHLY | YTD | AMOUNT | % | AMOUNT | % | |
| JANUARY | 2,463,093.50 | 2,463,093.50 | 2,713,532.20 | 2,713,532.20 | 250,438.70 | 10.17 | 250,438.70 | 10.17 | |
| FEBRUARY | 2,462,918.22 | 4,926,011.72 | 2,564,869.85 | 5,278,402.05 | 101,951.63 | 4.14 | 352,390.33 | 7.15 | |
| MARCH | 2,345,765.75 | 7,271,777.47 | 2,655,130.69 | 7,933,532.74 | 309,364.94 | 13.19 | 661,755.27 | 9.10 | |
| APRIL | 2,149,297.99 | 9,421,075.46 | 2,262,738.66 | 10,196,271.40 | 113,440.67 | 5.28 | 775,195.94 | 8.23 | |
| MAY | 2,364,390.24 | 11,785,465.70 | 2,541,112.27 | 12,737,383.67 | 176,722.03 | 7.47 | 951,917.97 | 8.08 | |
| JUNE | 2,182,206.60 | 13,967,672.30 | 2,404,645.54 | 15,142,029.21 | 222,438.94 | 10.19 | 1,174,356.91 | 8.41 | |
| JULY | 2,048,215.06 | 16,015,887.36 | | | | | | | |
| AUGUST | 2,243,975.43 | 18,259,862.79 | | | | | | | |
| SEPTEMBER | 2,107,756.07 | 20,367,618.86 | | | | | | | |
| OCTOBER | 2,406,982.18 | 22,774,601.04 | | | | | | | |
| NOVEMBER | 2,083,252.64 | 24,857,853.68 | | | | | | | |
| DECEMBER | 1,669,092.49 | 26,526,946.17 | | | | | | | |

\$28,757,246.39