

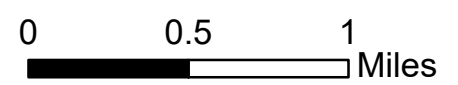
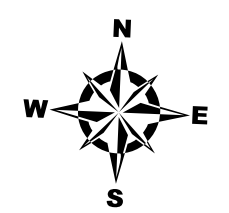
LEGEND

- State Trunkline
- County Primary
- County Local
- Railroad
- City or Village Street
- Uncertified Road
- Township Line
- City or Village Boundary
- Lake/River

PRIMARY ROAD SYSTEM IS 23.86 MILES
LOCAL ROAD SYSTEM IS 28.32 MILES

I HEREBY CERTIFY THAT THE ROADS SHOWN
HEREON BY SYMBOLS AS LOCAL ROADS ARE IN
USE AND ARE UNDER THE JURISDICTION OF THE
COUNTY ROAD COMMISSION.

SALINE TWP.



City of Saline

US 12

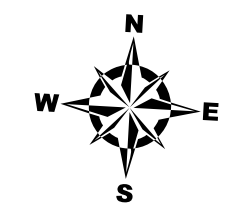


LEGEND

- State Trunkline
- County Primary
- County Local
- Railroad
- City or Village Street
- Section Line
- City or Village Boundary
- Lake/River

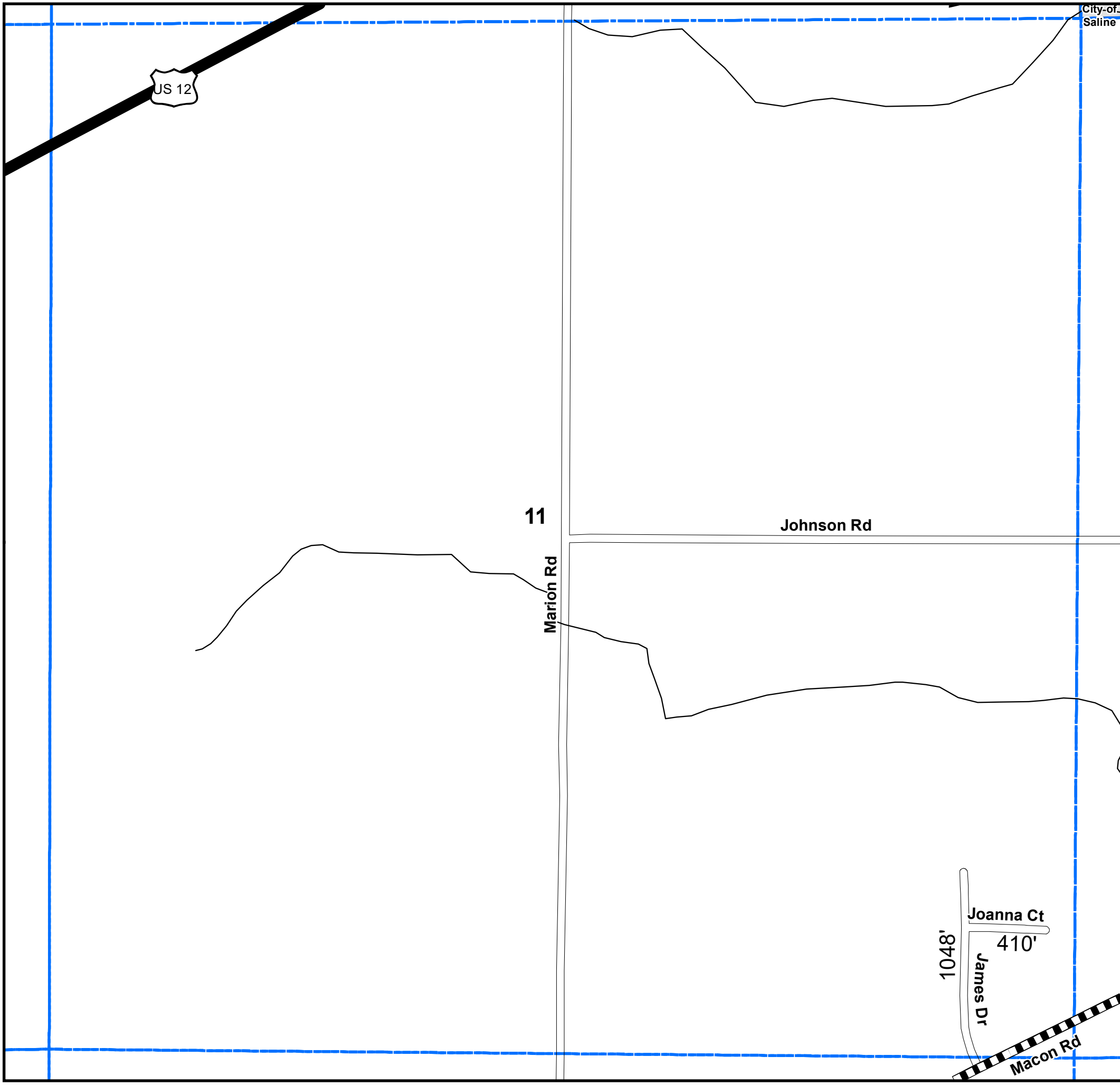
Total Feet 1,458 Equals 0.28 Miles

I HEREBY CERTIFY THAT THE ROADS SHOWN HEREON BY SYMBOL AS LOCAL ROADS ARE IN USE AND ARE UNDER THE JURISDICTION OF THE COUNTY ROAD COMMISSION.



0 500 1,000 Feet

Township SALINE
 Section 11 T 4S R 5E
 County WASHTENAW



11

Johnson Rd

Marion Rd

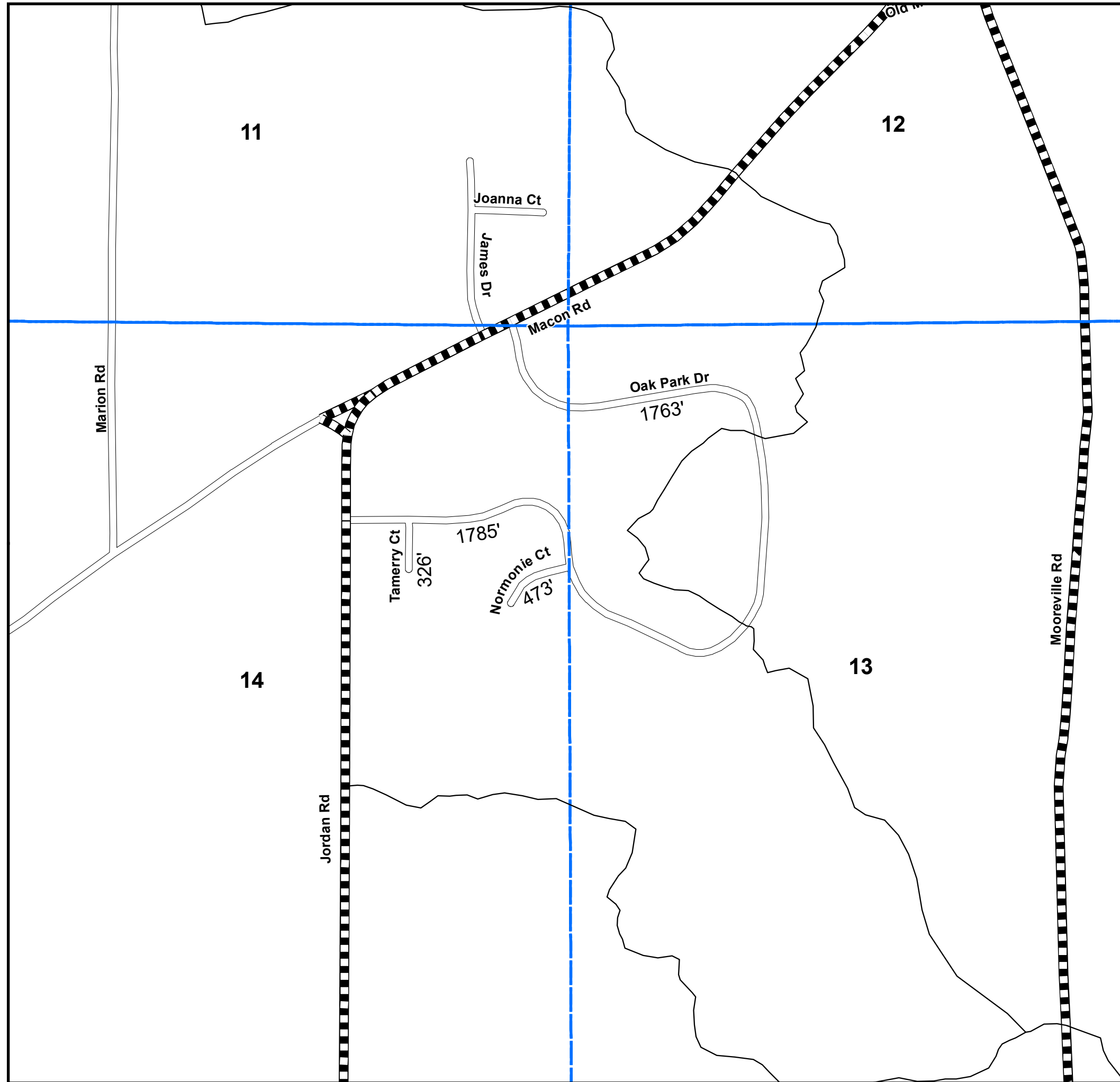
Joanna Ct

410'

James Dr

1048'

Macon Rd

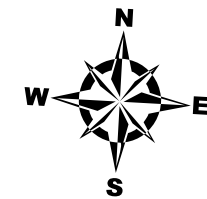


LEGEND

- State Trunkline
- County Primary
- County Local
- Railroad
- City or Village Street
- Section Line
- City or Village Boundary
- Lake/River

Total Feet 4,347 Equals 0.82 Miles

I HEREBY CERTIFY THAT THE ROADS SHOWN HEREON BY SYMBOL AS LOCAL ROADS ARE IN USE AND ARE UNDER THE JURISDICTION OF THE COUNTY ROAD COMMISSION.



0 500 1,000 Feet

Township SALINE
Section 11,13 & 14 T 4S R 5E
County WASHTENAW